



MCDAVID®

ENGLISH CATALOGUE
2019



Stronger

SQUAD GOALS
OWN IT
SUCCESS

THE PLAYMAKER

GREATNE

no pain
ALL GAIN
It's ON YOU

CHASING
TROPH

overtake
KING

Look Good
PLAY BETT

GEAR
UP!!

Strong
OWN IT
SUCCESS

Focus
It's ON
ALL OF
US

no pain
ALL GAIN

SUCCESS

CHASING
TROPHYS

overtake
KING

Look Good
PLAY BETT

GEAR
UP!!

game day

It's ON YOU

It's ON
ALL OF
US



HIGH TECH

TECHNOLOGY GUIDE



PHANTOM x STEALTH

Free your ankles from bulky lace-up braces and experience light-weight, performance and confidence like never before..



X FITNESS

We've created a line of BATTLE-TESTED FITNESS supports that stand up to the rigors of extreme fitness training and competition.



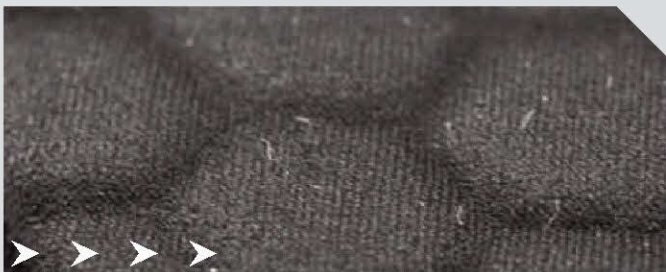
HIGH PERFORMANCE NEOPRENE

High Performance Neoprene. Superior non-petrol-based limestone CR neoprene is 100% latex-free. High Performance Neoprene utilizes micro-cell structure that delivers superior compression, greater therapeutic insulation and extra-light comfort.



Bio-Logix™

Bio-Logix™ with a low profile. Less weight. Maximum stability. Amazing comfort. Game-altering technology. This refined combo of rigid and soft materials creates precision semi-rigid support with self-adaptive fit and Body-In-Motion flex.



NEW HEX® 2.0

Our NEW HEX® 2.0 expands its technology by altering the size of our individual HEX® 2.0 pads we could provide even more fitted and comfortable protection. HEX® 2.0 is a premium, closed-cell foam padding permanently bonded to our fully breathable, moisture-wicking hDc™ fabric.

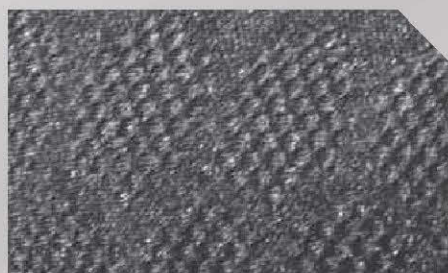


HEX® TUF

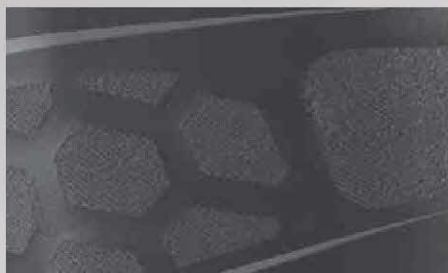
McDavid has created a unique, ultra-durable resistance technology that's ideally developed for the most severe surfaces. By infusing a powerfully tough element to our industry-leading HEX® padding, we present TUF.

AS WELL AS

We've been busy and that'll keep you busy. In addition to new technologies and products, we present **FURTHER ADVANCEMENTS** in the art and science of McDavid.



TARGETED[®]
COMPRESSION



RUNNERS
THERAPY



VOW[™]



BARCELONA
GOALKEEPER LINE



TRUE ICE

TABLE OF CONTENTS

4

PERFORMANCE

16

NEW X FITNESS

20

PROTECTION

28

NEW GOALKEEPER LINE

40

SPORTMED[®]

74

TRUE ICE

79

MEASURE TRUE

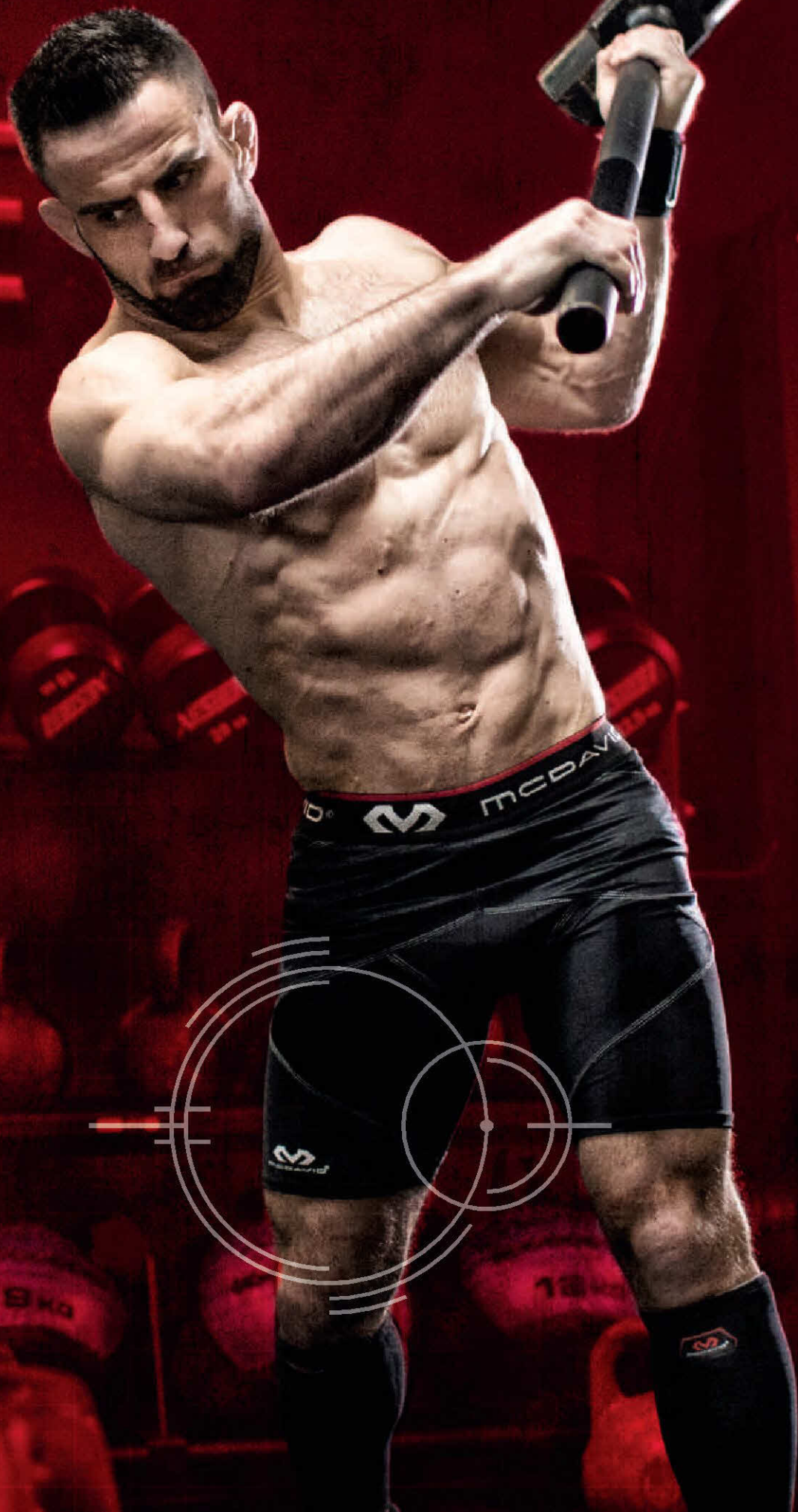
80

PRODUCT INDEX

8200

CROSS
COMPRESSION™ Short
with Hip Spica

[PAGE 10]



PERFORMANCE

NO LIGHTS, NO CAMERA, ALL ACTION

McDavid athletes perform for the inner light, not the limelight. If the praise comes, so be it. You grind it out and turn it up no matter the day, opponent or reward. Here at McDavid, that's how we attack Performance—every day and from every way. We're developing the highest tech compression, better cold therapy, the most effective recovery systems, and anything that makes you the star of your story.

6

ELITE TARGETED /
GENERAL COMPRESSION
ARM SLEEVES

10

CROSS COMPRESSION /
RECOVERY
SHORTS & TIGHTS

12

ELITE TARGETED / MULTISPORTS
COMPRESSION
SOCKS & LEG SLEEVES

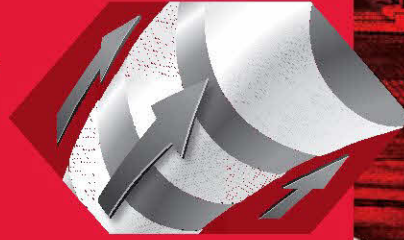
16

MCDavid X-LINE
WRIST WRAPS, ELBOW, ARM &
LEG SLEEVES

24"



TARGETED COMPRESSION

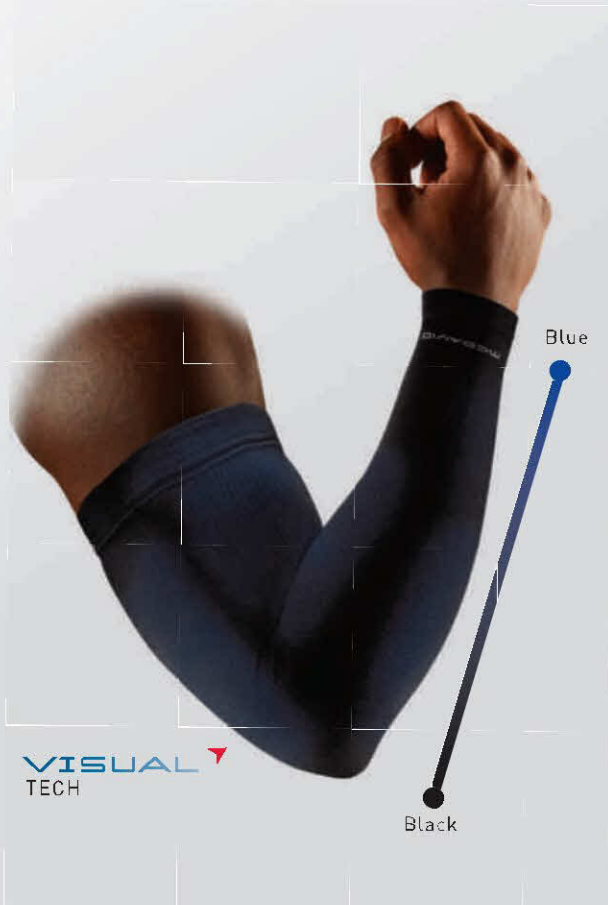


This graduated tension allows better blood flow for faster reoxygenation and reduction of lactic acid.

Helps you run/train longer and better.
Helps you recover faster and more completely.

- + High-tech, hybrid yarns blended for dryness, odor reduction and elevated hygiene
- + Enhanced blood flow
- + Reduced lactic acid
- + Muscle stimulation and stability

• Reduced fatigue, increased comfort for improved performance or recovery



VISUAL TECH

8837 ELITE COMPRESSION Arm Sleeves / Pair

- Arms benefit from increased blood circulation due to TARGETED COMPRESSION™ Technology
- Specialty yarns are quick-drying and antimicrobial for additional comfort
- Millimeters of Mercury at wrist (16-18 mmHg) and bicep (12.6-14.7 mmHg) to enhance blood flow
- hDc™ Moisture Management Technology is all about cool and dry
- Includes one pair, left and right specific



COLOURS > Black/Blue or White

Contents: 50% Tactel® / 40% Polyamid / 10% Lycra® (elastanel)

SIZE:

Measure around elbow:

S

20-24 cm
8-9.5"

M

24-28 cm
9.5-11"

L

28-32 cm
11-12.5"

XL

32-36 cm
12.5-14"



NEW 6511 ELITE COMPRESSION
Arm Sleeve / Single

- Muscle support while preventing abrasions and scratches
- Breathable knit compression for comfort
- hDc™ Moisture Management Technology is all about cool and dry
- Machine washable/dryable
- Includes one sleeve



COLOURS » Black or White

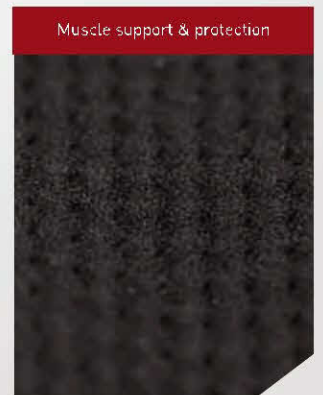
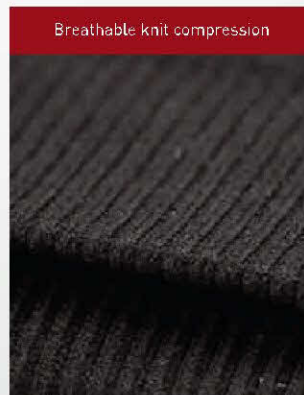
Contents: 50% Tactel® / 40% Polyamid / 10% Lycra® (elastane)



SIZE:

Measure
around
forearm:

S	M	L
8-9.5" 20-24cm	9.5-11" 24-28cm	11-13" 28-33cm





6566 Compression Arm Sleeve / Pair

- Arm muscles stay warm and active with compression Technology
- Comfort fit improves second-skin feeling and prevents irritation
- 6 thread flat-lock technology for strenght at the seams
- hDc™ Moisture Management Technology is all about cool and dry
- 50+ UV skin protection
- Includes one pair



COLOURS > Black, White, Royal Blue or Scarlet

Contents: 80% Nylon / 20% Elastane



SIZE:

Measure around elbow:

S/M

20-25 cm
8-10"

L/XL

25-30 cm
10-12"

541 Floorball Gloves / Pair

- Perforated C-TACK Performance grip material for extreme grip
- Integrated flex zones help eliminate material bunching and enhance thumb and finger dexterity
- Lightweight mesh for superior comfort and maximum ventilation
- Low profile strategically placed overlays for added lightweight support
- Finger-lock gussets help eliminate unwanted finger material slippage
- Machine washable
- Includes one pair



COLOUR > Black



SIZE:

Measure in palm:

S

17.8-18.4 cm
7-7.25"

M

18.4-19 cm
7.25-7.5"

L

19-19.7 cm
7.5-7.75"

XL

19.7-20.3 cm
7.75-8"

XXL

20.3-21 cm
8-8.25"



COMPRESSION

6566

Compression Arm Sleeve

[PAGE 8]



OFFICIAL PARTNER OF THE WIGAN WARRIORS



CROSS[®] COMPRESSION



This tech utilizes general compression science and our breathable, high-tenacity technical fabric in a design that mimics the **TAPING TECHNIQUES** of **ATHLETIC TRAINERS**. These techniques address common injuries to the hamstring, glute and quad muscle groups.

Cross Compression™ employs **STABILIZING** compression and a unique banding pattern that mimics the hip spica wrap used to treat **GROIN PULLS** and **HIP ABDUCTOR** and **FLEXOR STRAINS**. This helps prevent and aids in the recovery of large muscle injuries.



8200 CROSS COMPRESSION™ Shorts with Hip Spica

- Exclusive McDavid Cross Compression Technology warms and stabilizes muscles by mimicking taping methods used by athletic trainers, adding support to hamstrings and quads
- Forms a hip spica wrap for treatment of hip flexors
- 6-thread flat-lock technology for strength at the seams and added comfort.
- hDc™ Moisture Management Technology is all about cool and dry



COLOURS > Black or White

Contents: Body: 80% Nylon / 20% Elastane; Band: 85% nylon / 15% elastane



SIZE:

Men's waist size:

S

71-76 cm
28-30"

M

76-86 cm
30-34"

L

86-97 cm
34-38"

XL

97-107 cm
38-42"

XXL

107-117 cm
42-46"



8100 Men's Compression Shorts

- Compression Technology warms and stabilizes muscles for improved performance
- Comfort fit improves the second-skin feeling and prevents irritation
- 6 thread flat-lock technology for strenght at the seams
- hDc™ Moisture Management Technology is all about cool and dry



COLOURS » Black, White, Royal Blue or Scarlet

Contents: 85% Nylon / 15% Elastane

Youth only in Black



SIZE:

	S	M	L	XL	XXL
Men's waist size:	71-76 cm 28-30"	76-86 cm 30-34"	86-97 cm 34-38"	97-107 cm 38-42"	107-117 cm 42-46"
Youth waist size:	-61 cm -24"	61-66 cm 24-26"	66-76 cm 26-30"	- -	- -

704 Women's Compression Shorts

- Compression Technology warms and stabilizes muscles for improved performance
- Comfort fit improves the second-skin feeling and prevents irritation
- Intera-lined crotch panel incorporates a single center seam for extended comfort
- 6 thread flat-lock technology for strenght at the seams
- hDc™ Moisture Management Technology is all about cool and dry



COLOURS » Black or White

Contents: 85% Nylon / 15% Elastane



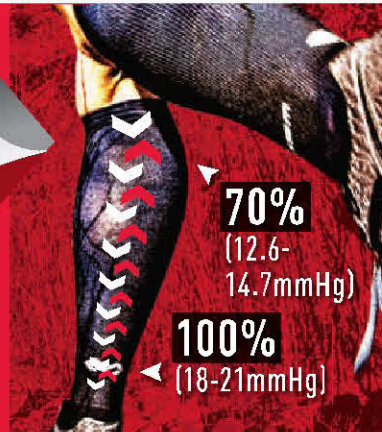
SIZE:

	S	M	L	XL	XXL
Women's waist size:	66-72 cm 26-28.5"	72-77 cm 28.5-30.5"	77-85 cm 30.5-33.5"	85-93 cm 33.5- 36.5"	+93 cm +36.5"



TARGETED COMPRESSION

Compression levels designed to apply higher pressure at the ankle, while gradually tapering off up the calf. This graduated tension allows better blood flow for faster reoxygenation and reduction of lactic acid.



8831 ELITE RECOVERY COMPRESSION Socks / Pair

- **TARGETED COMPRESSION™** Technology creates increased blood flow to feet and calves
- Increases blood flow post-exertion for a faster and more complete recovery
- Unique, specialty yarns featuring seaweed and zinc add recovery, energy, comfort, sweat absorption and antimicrobial properties
- Anatomical 3D knitting design at toe and heel provides enhanced comfort/protection
- hDc Moisture Management Technology wicks the sweat and brings the cool
- Millimeters of Mercury at ankle [18-21mmHg] and top of sock [12.6-14.7mmHg] to enhance blood flow
- Can be worn for extended periods of time
- Includes one pair, left and right specific



COLOURS > Black or White

Contents: 44% [Cotton/Seacell/Smartcel Sensitive] / 34% Tactel / 14% Polyamid / 8% Lycra [elastane]

SIZE:

EU Shoe Size:

UK Shoe Size:

S

36-38

3.5-5

M

39-41

6-7.5

L

42-44

8-9.5

XL

44-46

9.5-11.5

5-yarn specialty composition



Anatomical 3D knitting



Increases blood flow



Sweat absorption and antimicrobial





8832 ELITE COMPRESSION Runner Socks / Pair

- Calves and feet benefit from increased blood circulation due to **TARGETED COMPRESSION™** Technology
- Specialty yarns are quick-drying and antimicrobial for additional comfort
- Traction design at footbed for better floor grip
- Achilles support via unique knitting pattern
- Ventilated toe stitching provides maximum breathability
- hDc™ Moisture Management Technology is all about cool and dry
- Millimeters of Mercury* (units of measurement/no actual mercury) at ankle (18-21mmHg) and top of sock (12.6-14.7mmHg) to enhance blood flow
- Includes one pair, left and right specific



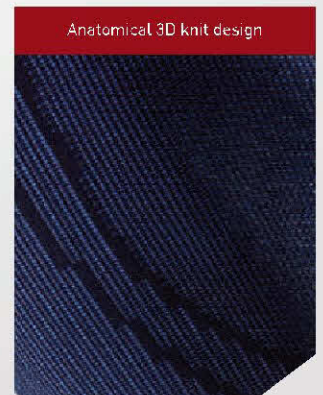
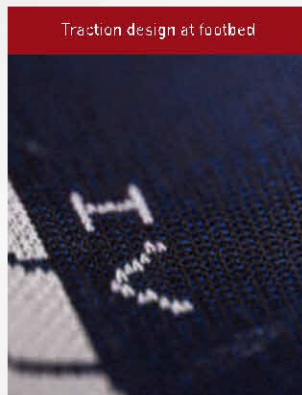
COLOURS » Black/Blue or White

Contents: 46% Tactel[®] / 26% Polyamid / 19% Timbrelle[®] Care / 9% Lycra[®] (elastane)



SIZE:

	S	M	L	XL
EU Shoe Size:	36-38	39-41	42-44	44-46
UK Shoe Size:	3.5-5	6-7.5	8-9.5	9.5-11.5





VISUAL
TECH

8836 ELITE COMPRESSION Calf Sleeves / Pair

- **TARGETED COMPRESSION™** Technology creates increased blood flow to the calves
- Engineered with quick-drying and antimicrobial 3-yarn specialty blend improved recovery, comfort and odor control
- hDc Moisture Management Technology wicks the sweat and brings the cool Millimeters of Mercury at ankle (18-21mmHg) and top of sleeve (12.6-14.7mmHg) to enhance blood flow
- Includes one pair, left and right specific



COLOURS > Black/Blue or White

Contents: 50% Tactel / 40% Polyamid / 10% Lycra (elastane)

SIZE:

Measure around calf:

S	M	L	XL
36-38 cm 3.5-5"	39-41 cm 6-7.5"	42-44 cm 8-9.5"	44-46 cm 9.5-11.5"

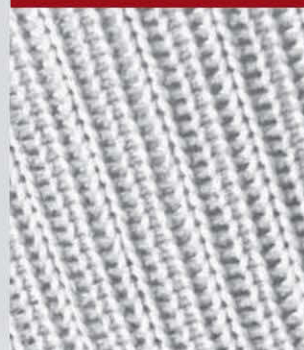
3-yarn specialty composition



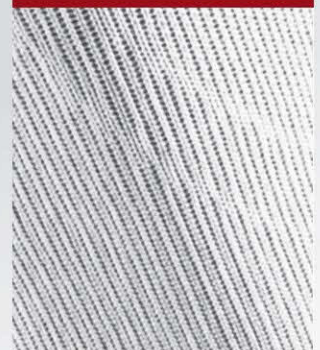
Increased blood flow to the calves



Reduced fatigue and lactic acid



Quick-drying and antimicrobial





8841 Multisports Compression Socks / Pair

- Calves and feet benefit from increased blood circulation due to **TARGETED COMPRESSION™** Technology
- Specialty yarns are quick-drying and antimicrobial for additional comfort
- Anatomical 3D knitting design at toe and heel provides enhanced comfort/protection
- Traction design at footbed for better floor grip
- hDc™ Moisture Management Technology wicks the sweat and brings the cool
- Includes one pair, left or right specific



COLOURS > Black

Contents: 75% Nylon / 25% Spandex (elastane)

SIZE:

	S	M	L	XL
EU Shoe Size:	36-38	39-41	42-44	44-46
UK Shoe Size:	3.5-5	6-7.5	8-9.5	9.5-11.5



8846 Multisports Compression Calf Sleeves / Pair

- Calves benefit from increased blood circulation due to **TARGETED COMPRESSION™** Technology
- Specialty yarns are quick-drying and antimicrobial for additional comfort
- hDc™ Moisture Management Technology wicks the sweat and brings the cool
- Wear during run/game/workout/for improved circulation/performance
- Includes one pair



COLOURS > Black

Contents: 75% Nylon / 25% Spandex (elastane)

SIZE:

	S	M	L	XL
Measure around calf:	36-38 cm 3.5-5"	39-41 cm 6-7.5"	42-44 cm 8-9.5"	44-46 cm 9.5-11.5"



NEW 6400 Abrasion Knee Sleeves / Pair

- Dual Layer protection against scuffs, burns and skids on all surfaces
- Extended length equals great fit, more protection
- Compression technology supports muscles and joints
- hDc™ Moisture Management Technology is all about cool and dry
- Left/right specific/incudes one pair



COLOURS > Black or White

Contents: 80% Nylon / 20% Spandex (elastane)

SIZE:

	S	M	L	XL
Measure around knee:	33-36.8cm 13-14.5"	36.8-39cm 14.5-15.5	39.4-42cm 15.5-16.5	42-47cm 16.5-18.5





» NEW «

McDAVID FOR FITNESS

IF YOU'RE GOING TO THE EXTREME. If you're needing the exceptional. If you're building the extraordinary. You are an X Fitness athlete.

We've created a line of **BATTLE-TESTED FITNESS** supports that stand up to the rigors of extreme fitness training and competition. Xf delivers **EXTRA SUPPORT, EXTRA PROTECTION** and **EXTRA CONFIDENCE** to targeted joints and to highly focused athletes.

16

PERFORMANCE



NEW X607 DUAL LAYER COMPRESSION Elbow Sleeves / Pair

- Dual layer for extra protection during intense activities
- Compression tech warms and stabilizes muscles
- 50+ UV skin protection
- Includes one pair



COLOURS » Black

Contents: 60% Nylon / 22% Polyamid / 18% Spandex (elastane)

SIZE:

Measure around elbow:

S

25.5-28 cm
10-11"

M

28-30.5 cm
11-12"

L

30.5-33 cm
12-13"

XL

33-35.5 cm
13-14"



NEW X501 FLEX FIT Wrist Wraps / Pair

- Flexible but firm nylon blend material for support and range of motion
- Pad featuring Active Cooling Technology for wiping sweat
- Convenient elastic band to easily start the wrap
- Includes one pair



COLOURS > Black / Red

Contents: 82% Polyester, 9% Nylon, 7% Polyamide, 2% Rubber - Not made with natural rubber latex

SIZE:

ONE SIZE



NEW X503 HEAVY DUTY Wrist Wraps / Pair

- Firm, 3mm heavy duty elastic for your heaviest lifts
- More rigid structure for the more support
- Convenient elastic band to easily start the wrap
- Includes one pair



COLOURS > Black

Contents: 91% Polyester, 8% Nylon, 1% Polyamide, 2% Rubber - Not made with natural rubber latex

SIZE:

ONE SIZE



NEW X601 DUAL LAYER COMPRESSION Arm Sleeves / Pair

- Dual layer for extra protection during intense activities
- Compression tech warms and stabilizes muscles
- 50+ UV skin protection
- Includes one pair



COLOURS > Black

Contents: 60% Nylon, 22% Polyester, 18% Spandex (Elastane) - Not made with natural rubber latex



SIZE:

	S	M	L	XL
Measure around elbow:	25.5-28 cm 10-11"	28-30.5 cm 11-12"	30.5-33 cm 12-13"	33-35.5 cm 13-14"

»NEW«

XTM
FOR FITNESS



NEW

X605

DUAL LAYER
COMPRESSION Knee Sleeves / Pair

[PAGE 19]



NEW X801 DUAL DENSITY
Knee Support Sleeves / Pair

- 6mm side panels provide ultimate lateral support
- Anatomically pre-shaped for ideal, comfortable fit
- Thicker neoprene for more therapeutic warmth
- Seamless back-of-knee for no-pinch bending
- Includes one pair



COLOURS » Black

Contents: 100% Latex-free 5mm Neoprene (CR) / 6mm Neoprene (SBR) exclusive of binding and cover fabric

SIZE:

	S	M	L	XL
Measure around knee:	33-35.5 cm 13-14"	35.5-38 cm 14-15"	38-40.5 cm 15-16"	40.5-44.5 cm 16-17"

NEW X605 DUAL LAYER
COMPRESSION Knee Sleeves / Pair

- Dual layer for extra protection during intense activities
- Compression tech warms and stabilizes muscles
- 50+ UV skin protection
- Includes one pair



COLOURS » Black

Contents: 60% Nylon, 22% Polyester, 18% Spandex (elastane)

SIZE:

	S	M	L	XL
Measure around knee:	33-35.5 cm 13-14"	35.5-38 cm 14-15"	38-40.5 cm 15-16"	40.5-44.5 cm 16-17"

NEW X609 DUAL LAYER
COMPRESSION Calf Sleeves / Pair

- Dual layer for extra protection during intense activities
- Compression tech warms and stabilizes muscles
- 50+ UV skin protection
- Includes one pair



COLOUR » Black

Contents: 60% Nylon, 22% Polyester, 18% Spandex (elastane)

SIZE:

	S	M	L	XL
Measure around calf:	33-35.5 cm 13-14"	35.5-38 cm 14-15"	38-42 cm 15-16.5"	42-45.7 cm 16.5-18"



7962

HEX[®]

Tank Shirt / 3-pad

[PAGE 26]

PROTECTION 20

Nikola Karabatic
Handball World Champion,
France

PROTECTION

PROTECTING BODY & MIND

Great protective gear works on every level. We design for the specific ergonomic and structural nature of each body part and potential condition. In addition, we build for the very real need to bolster every athlete's attitude and confidence. 35+ years give us the right attitude and full confidence to deliver. McDavid supports your ligaments, muscles and your next game-altering thought.

22 ELITE / GENERAL HEX[®]
ARM SLEEVES

28 HEX[®] GOALKEEPER BARCELONA
SHIRTS, SHORTS, PANTS

37 SPORTS SPECIFIC
VOLLEYBALL, HANDBALL & FOOTBALL

26 PROTECTIVE APPAREL
SHIRTS, SHORTS & PANTS

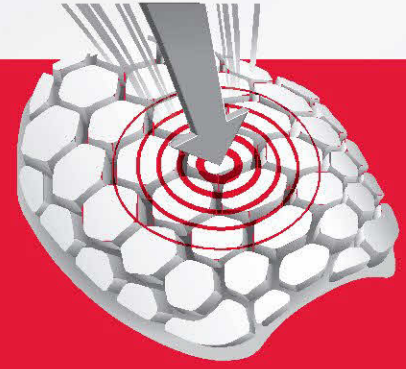
34 ELITE / HEX[®] TUF
LEG SLEEVES & PADS





ELITE HEX[®]

GETS IN EVEN BETTER SHAPE



Our **HEX[®] TECHNOLOGY** expands its industry leading position with one more **INNOVATIVE LEAP FORWARD**. HEX[®] is premium, closed-cell foam padding permanently bonded to our fully breathable, moisture-wicking hDc[®] fabric. That you knew. We discovered that by ergonomically altering the size of our individual HEX[®] pads we could provide even **MORE FITTED** and **COMFORTABLE PROTECTION**. 2019 is truly shaping up.

HEX[®] CHECKS ALL THE BOXES



6501 ELITE HEX[®] Shooter Arm Sleeve / Single

- Newly designed anatomically graduated 9mm HEX[®] Technology contours around elbow for ultimate comfort and protection
- Supports muscles while preventing abrasions and scratches
- Breathable knit compression for comfort
- hDc[™] Moisture Management Technology is all about cool and dry
- Machine washable/dryable
- Includes one sleeve



COLOURS ▶ Black or White

Contents: 95% Nylon/ 5% Spandex (elastane); polyethylene foam

SIZE:

Measure around elbow:

S

25-28 cm
10-11"

M

28-30 cm
11-12"

L

30-33 cm
12-13"

22

PROTECTION

Newly designed 9mm HEX[®] Technology



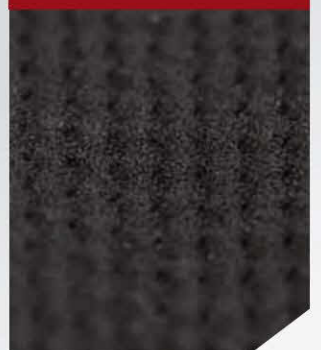
hDc[™] Moisture Management Technology



Breathable knit compression



Protects against body-to-body impacts





Harrison Barnes
Pro Basketball Player,
Dallas

6446

HEX® Leg Sleeves

[PAGE 35]

6501

ELITE HEX[®]

Shooter Arm Sleeve

[PAGE 22]

STREAMLINED, GRADUATED
HEX[®] CONTOURS AROUND
JOINT FOR MAX PROTECTION



651 HEX® Forearm Sleeves / Pair

- Superior forearm protection available in 9mm HEX® Technology
- Ideal for contact sports
- hDc™ Moisture Management Technology is all about cool and dry
- Machine washable
- Includes one pair

COLOURS > Black

Contents: 80% Nylon / 20% Elastane; Polyethylene foam



SIZE:

Measure around elbow:

S	M	L	XL	XXL
20-24 cm 8-9,5"	24-28 cm 9,5-11"	28-30 cm 11-12"	30-35 cm 12-14"	38-43 cm 15-17"

6500 HEX® Shooter Arm Sleeve / Single

- 9mm HEX® Technology positioned at the elbow
- Arm compression maintains muscle warmth and prevents abrasions and scratches
- hDc™ Moisture Management Technology is all about cool and dry
- Machine washable
- Includes one sleeve



COLOURS > Black, White, Royal Blue or Scarlet

Contents: 80% Nylon / 20% Elastane; Polyethylene foam



SIZE:

Measure around elbow:

XS	S	M	L
23-25 cm 9-10"	25-28 cm 10-11"	28-30 cm 11-12"	30-33 cm 12-13"



7962 HEX® Tank Shirt / 3-pad

- Tank top styling ideal for basketball/handball
- 9 mm HEX® Technology perfectly positioned to protect ribs and spine
- Self armhole binding provides better fit and doesn't stretch out after use
- hDc™ Moisture Management Technology is all about cool and dry
- 6 thread flat-lock technology for strength at the seams and added comfort



COLOURS > Black or White

Contents: 80% Nylon / 20% Elastane; Polyethylene foam

SIZE:

Men's chest size:

S

86-91 cm
34-36"

M

91-102 cm
36-40"

L

102-112 cm
40-44"

XL

112-122 cm
44-48"

XXL

122-132 cm
48-52"



7737 HEX® Goalkeeper Shirt EXTREME

- Ideal for soccer or other contact sports with continuous protection at the ribs, elbows and shoulders
- 9 mm HEX® Technology is lightweight, flexible and breathable
- hDc™ Moisture Management Technology is all about cool and dry

COLOURS > Black

Contents: 80% Nylon / 20% Elastane; Polyethylene foam

SIZE:

Men's chest size:

S

86-91 cm
34-36"

M

91-102 cm
36-40"

L

102-112 cm
40-44"

XL

112-122 cm
44-48"

XXL

122-132 cm
48-52"



7738 HEX® Goalkeeper Shirt DIVE

- Ideal for soccer or other contact sports with continuous protection on the elbows and shoulders
- 9 mm Hex® Technology is lightweight, flexible and breathable
- hDc™ Moisture Management Technology is all about cool and dry

COLOURS > Black

Contents: 80% Nylon / 20% Elastane; Polyethylene foam

SIZE:

Men's chest size:

S

86-91 cm
34-36"

M

91-102 cm
36-40"

L

102-112 cm
40-44"

XL

112-122 cm
44-48"

XXL

122-132 cm
48-52"

Youth chest size:

-

-

67-75 cm

26.5-29.5"

75-84 cm

29.5-33"

-

-

-

-



7739

HEX[®]

Goalkeeper Shirt Barcelona

[PAGE 28]

7746

HEX[®]

Goalkeeper 3/4 Thigh Barcelona

[PAGE 28]

Marc-André ter Stegen
Professional Goalkeeper,
Barcelona



NEW 7739 HEX® Goalkeeper Shirt
BARCELONA

- Top of the line soccer goalkeeper shirt with our newest HEX® 2.0 technology protection at the ribs, elbows and shoulders
- 9 mm HEX® 2.0 Technology is lightweight, flexible and breathable
- hDc™ Moisture Management Technology is all about cool and dry

COLOURS » Black/Camo

Contents: 80% Nylon / 20% Elastane; Polyethylene foam

SIZE:

Men's chest size:

S	M	L	XL	XXL
86-91 cm 34-36"	91-102 cm 36-40"	102-112 cm 40-44"	112-122 cm 44-48"	122-132 cm 48-52"



NEW 7742 HEX® Goalkeeper Short
BARCELONA

- Top of the line soccer goalkeeper short our newest HEX® 2.0 protection at the hips and thighs
- 9 mm (upper hips) and 5 mm (thighs) HEX® 2.0 Technology is lightweight, flexible and breathable
- hDc™ Moisture Management Technology is all about cool and dry
- Double layer fabric on top of the padding for extra durability

COLOURS » Black/Camo

Contents: 80% Nylon / 20% Elastane; Polyethylene foam

SIZE:

Men's waist size:

S	M	L	XL	XXL
71-76 cm 28-30"	76-86 cm 30-34"	86-97 cm 34-38"	97-107 cm 38-42"	107-117 cm 42-46"



NEW 7746 HEX® Goalkeeper 3/4 Thigh
BARCELONA

- Top of the line soccer goalkeeper short our newest HEX® 2.0 technology
- Protection at the hips, thighs and knees: 9 mm (upper hips and knees) and 5 mm (thighs)
- HEX® 2.0 Technology is lightweight, flexible and breathable
- hDc™ Moisture Management Technology is all about cool and dry

COLOURS » Black/Camo

Contents: 80% Nylon / 20% Elastane; Polyethylene foam

SIZE:

Men's waist size:

S	M	L	XL	XXL
71-76 cm 28-30"	76-86 cm 30-34"	86-97 cm 34-38"	97-107 cm 38-42"	107-117 cm 42-46"



NEW **7743** Dual Performance Shorts

- All sports performance short which combines the thermal support of Neoprene with the compression of a heavy duty polyester Spandex

COLOURS ▶ Black

Contents: 66.5% Polyester, 8% Spandex, 22% Neoprene, 5% Polyamides

SIZE:

Measure around waist:

S

71-76 cm
28-30"

M

76-86 cm
30-34"

L

86-97 cm
34-38"

XL

97-107 cm
38-42"

XXL

107-117 cm
42-46"



NEW **7747** Dual Performance Pants

- All sports performance short which combines the thermal support of Neoprene with the compression of a heavy duty polyester Spandex

COLOURS ▶ Black

Contents: 65% Polyester, 8% Spandex, 22% Neoprene, 5% Polyamides

SIZE:

Measure around waist:

S

71-76 cm
28-30"

M

76-86 cm
30-34"

L

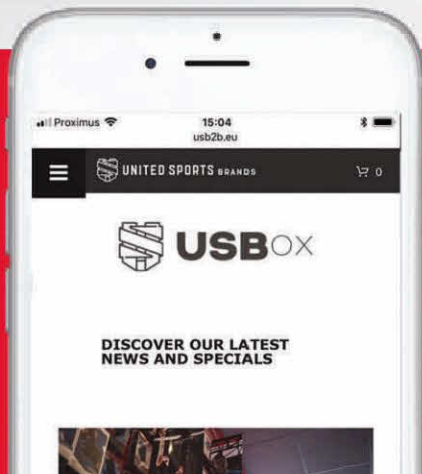
86-97 cm
34-38"

XL

97-107 cm
38-42"

XXL

107-117 cm
42-46"



ORDERING ON-THE-GO?

DISCOVER

OUR NEW B2B PORTAL

WWW.USB2B.EU



7745 HEX® Goalkeeper 3/4 Thights

- Ideal for soccer or other contact sports with continuous protection at the hips, knees and thighs
- 9 mm HEX® Technology is lightweight, flexible and breathable
- hDc™ Moisture Management Technology is all about cool and dry

COLOURS > Black

Contents: 80% Nylon / 20% Elastane; Polyethylene foam

SIZE:

	S	M	L	XL	XXL
Measure around waist:	71-76 cm 28-30"	76-86 cm 30-34"	86-97 cm 34-38"	97-107 cm 38-42"	107-117 cm 42-46"

7991 HEX® Shorts with Contoured Wrap-around Thigh

- Redesigned for a thigh-wrapping fit that puts precise protection where needed
- Ideal for Basketball, Handball and other contact sports with protection at the hips, tailbone and thighs
- 9 mm HEX® Technology is lightweight, flexible and breathable
- Compression technology supports large muscle groups to help reduce pulls and fatigue
- hDc™ Moisture Management Technology is all about cool and dry
- 6 thread flat-lock technology for strength at the seams and added comfort
- Wash it, dry it, wear it



COLOURS > Black or White

Contents: 80% Nylon / 20% Elastane; Polyethylene foam

SIZE:

	S	M	L	XL	XXL
Measure around waist:	71-76 cm 28-30"	76-86 cm 30-34"	86-97 cm 34-38"	97-107 cm 38-42"	107-117 cm 42-46"

737 HEX® Thudd Shorts™

- Designed to adjust to your every move for continuous protection at hips, tailbone and thighs
- 9 mm HEX® Technology is lightweight, flexible and breathable
- HEX® hip pads feature newly engineered shape for more precise coverage
- Compression technology supports large muscle groups to help reduce pulls and fatigue
- hDc™ Moisture Management Technology is all about cool and dry
- 6 thread flat-lock technology for strength at the seams and added comfort
- Wash it, dry it, wear it



COLOURS > Black or White

Contents: 80% Nylon / 20% Elastane; Polyethylene foam

SIZE:

	S	M	L	XL	XXL
Measure around waist:	71-76 cm 28-30"	76-86 cm 30-34"	86-97 cm 34-38"	97-107 cm 38-42"	107-117 cm 42-46"



7741 HEX® Goalkeeper Shorts

- Ideal for soccer or other contact sports with continuous protection at the hips and thighs
- 9 mm HEX® Technology is lightweight, flexible and breathable
- hDc™ Moisture Management Technology is all about cool and dry
- Double layer fabric on top of the padding for extra durability

COLOURS > Black

Contents: 80% Nylon / 20% Elastane; Polyethylene foam



SIZE:

	S	M	L	XL	XXL
Men's waist size:	71-76 cm 28-30"	76-86 cm 30-34"	86-97 cm 34-38"	97-107 cm 38-42"	107-117 cm 42-46"
Youth waist size:	-	60-66 cm 24-26"	66-76 cm 26-30"	-	-

724 HEX® Sliding Shorts

- Ideal for soccer or other contact sports with continuous protection at the hips and thighs
- 3 mm HEX® Technology is lightweight, flexible and breathable
- hDc™ Moisture Management Technology is all about cool and dry



COLOURS > Black or White

Contents: 80% Nylon / 20% Elastane; Polyethylene foam
Youth only in Black



SIZE:

	S	M	L	XL	XXL
Men's waist size:	71-76 cm 28-30"	76-86 cm 30-34"	86-97 cm 34-38"	97-107 cm 38-42"	107-117 cm 42-46"
Youth waist size:	-	60-66 cm 24-26"	66-76 cm 26-30"	-	-

3300 Athletic Supporter / Mesh

- Mesh pocket enhances ventilation
- Wide elastic waistband for wide-ranging comfort and support
- hDc™ Moisture Management Technology is all about cool and dry
- Includes FlexCup™

COLOURS > Grey

Contents: 80% Nylon / 15% Elastane / 5% polyester

Cup: Polypropylene TPR rubber



SIZE:

	S	M	L	XL
Measure around waist:	71-76 cm 28-30"	76-86 cm 30-34"	86-97 cm 34-38"	97-107 cm 38-42"



INNOVATION COMPRESSED

We know the great advantages of our McDavid **COMPRESSION** — we also know it can always be better. Rather than uniformed pressure across the entire sleeve, our Knit Compression Technology provides **MORE CONTROLLED**, varied and **EFFECTIVE COMPRESSION** on critical areas. Plus, it breathes, breathes, breathes, and that means **FREE-FLOWING COMFORT**.



NEW 6448 ELITE HEX[®] Leg Sleeve / Single

- 9mm HEX[®] Technology of varied sizes is specifically designed to anatomically wrap, flex and protect the knee
- Extended length equals great fit and added skin protection
- Breathable knit compression for comfort and performance
- hDc Moisture Management Technology is all about cool and dry
- Machine washable/dryable
- Includes one pair



COLOURS > Black or White

Contents: 80% nylon/ 20% spandex (elastane); polyethylene foam

SIZE:

Measure around knee:

S	M	L	XL
33-36.8 cm 13-14.5"	37-39.5 cm 14.5-15.5"	39.5-42 cm 15.5-16.5"	42-47 cm 16.5-18.5"

Newly designed 9mm HEX[®] Technology



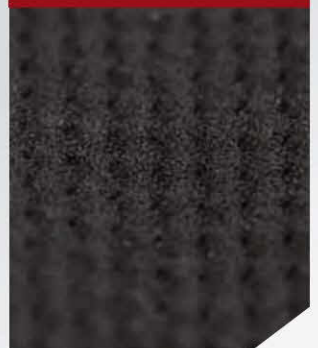
hDc[™] Moisture Management Technology



Breathable knit compression



Protects against body-to-body impacts



6448

ELITE
HEX[®] Leg Sleeves

[PAGE 32]

Breathable Knit Compression provides helpful support, enhanced blood-flow, tech confidence and more airflow, while avoiding neoprene.

BREATHABLE
KNIT



COMPRESSION





HEX[®] TUF



When you're playing **big** and making **frequent contact** with unforgiving floors and the hard surfaces of sport, you want to be wearing **TUF**. McDavid has created a unique, ultra-durable resistance technology that's ideally developed for the most **SEVERE SURFACES**. By infusing a powerfully **tough element** to our industry-leading **HEX[®] padding**, we present TUF. Think gym floors, courts, obstacle courses and the hard tests of your most torturous imagination. Withstand the repeated **scuffs, skids** and **tears** of hard-surface play. Save wear and tear on **YOU** and **YOUR GEAR**.



6446X HEX[®] TUF Leg Sleeves / Pair

- Featuring exclusive new patent-pending ultra-durable fused polymer TUF coating pattern for the rigors of court and youth sports
- HEX[®] TUF can withstand repeated scuffs and skids on hard court surfaces, providing enhanced, long-lasting wear
- Ideal for body-to-surface contact or body-to-body contact
- Leg Sleeves feature new anatomical 9mm HEX[®] Technology that contours around the knee for ultimate comfort and protection
- Extended length for better fit as well as added protection against cuts and scratches
- hDc™ Moisture Management Technology is all about cool and dry
- Machine washable/dryable
- TUF Technology has been tested by an independent 3rd-party sporting goods testing lab for abrasion, durability and strength—meeting or exceeding ASTM textile test standards
- Includes one pair



COLOURS > Black or white

Contents: 80% Nylon / 20% Spandex (elastane); Polyethylene foam



SIZE:

Measure around knee:

S	M	L	XL
33-37 cm 13-14.5"	37-39 cm 14.5-15.5"	39-42 cm 15.5-16.5"	42-47 cm 16.5-18.5"



6446 HEX® Leg Sleeves / Pair

- Leg Sleeves featuring 9 mm HEX® Technology is favorite among pro and collegiate players
- Extended length for better fit as well as added protection against cuts and scratches
- hDc™ Moisture Management Technology is all about cool and dry
- Machine washable
- Includes one pair



COLOURS » Black, White, Royal Blue or Scarlet

Contents: 80% Nylon/20% Elastane; Polyethylene foam



SIZE:

Measure around knee:

S	M	L	XL
33-37 cm 13-14.5"	37-39 cm 14.5-15.5"	39-42 cm 15.5-16.5"	42-47 cm 16.5-18.5"

6440 HEX® Knee / Elbow / Shin Sleeves / Pair

- Highly versatile pad available in 9 mm HEX® Technology
- Pick your position – Knee, Elbow, Shin or wherever it fits
- hDc™ Moisture Management Technology is all about cool and dry
- Machine washable
- Includes one pair

COLOURS » Black

Contents: 80% nylon/20% elastane; polyethylene foam



SIZE:

Measure around knee:

S	M	L	XL
33-37 cm 13-14.5"	37-39 cm 14.5-15.5"	39-42 cm 15.5-16.5"	42-47 cm 16.5-18.5"

SIZE:

Measure around calf:

S	M	L	XL
32-36 cm 12.5-14"	36-38 cm 14-15"	38-41 cm 15-16"	41-46 cm 16-18"

SIZE:

Measure around elbow:

S	M	L	XL
25-28 cm 10-11"	28-30 cm 11-12"	30-33 cm 12-13"	- -



646

Volleyball Knee Pads / Pair

[PAGE 37]



601 Sport Knee Pads / Pair

- Entry level protection
- Comfortable elastic sleeve with closed-cell foam padding
- Includes one pair
- CE approved



COLOURS » Black, White, Royal Blue, Scarlet or Navy Blue

Contents: 90% Nylon / 10% Elastane; Vinyl nitrile closed-cell foam

XXS only in Black

SIZE:

Measure around knee:

XXS

-25 cm
-10"

XS

25-30 cm
10-12"

S

30-35 cm
12-14"

M

35-38 cm
14-15"

L

38-43 cm
15-17"

XL

43-50 cm
17-20"



602 Flex-Force Knee Pads / Pair

- Elastic sleeve breathes, while contoured foam padding protects and flexes
- Low profile design for high profile volleyball/basketball performance
- Includes one pair
- CE approved



COLOURS » Black or Navy Blue

Contents: 90% Nylon / 10% Elastane; Knit Elastic; vinyl nitrile closed-cell foam

SIZE:

Measure around knee:

XS

25-30 cm
10-12"

S

30-35 cm
12-14"

M

35-38 cm
14-15"

L

38-43 cm
15-17"

XL

43-50 cm
17-20"



646 Volleyball Knee Pads / Pair

- Specifically designed for volleyball
- Vinyl Nitrile foam for superior impact resistance
- Open back design for greater freedom of movement
- PTFE coating reduces friction
- Includes one pair
- CE approved



COLOURS » Black or Navy Blue

Contents: 90% Nylon / 10% Elastane; Knit Elastic; 1,3 cm vinyl nitrile closed-cell foam

SIZE:

Measure around knee:

S

30-35 cm
12-14"

M

35-38 cm
14-15"

L

38-43 cm
15-17"

XL

43-50 cm
17-20"





671 Handball Knee Pads / Single

- Specifically designed for handball
- Laminated neoprene layer for impact resistance
- Kevlar coating reduces friction
- 4 mm neoprene gives support and warmth through thermal/compression therapy
- Includes one sleeve
- Fits left or right
- CE approved

COLOURS » Black

Content: 100% Nylon / 100% Neoprene



SIZE:

Measure around knee:

XS

25-30 cm
10-12"

S

30-35 cm
12-14"

M

35-38 cm
14-15"

L

38-43 cm
15-17"

XL

43-50 cm
17-20"

XXL

50-56 cm
20-22"

672 Handball Elbow Pads / Single

- Specifically designed for handball
- EVA foam for superior impact resistance
- 4 mm neoprene gives support and warmth through thermal/compression therapy
- Includes one sleeve
- Fits left or right
- CE approved

COLOURS » Black

Content: 100% Nylon / 100% Neoprene



SIZE:

Measure around elbow:

XS

-18 cm
-7"

S

18-21 cm
7-9"

M

22-25 cm
9-10"

L

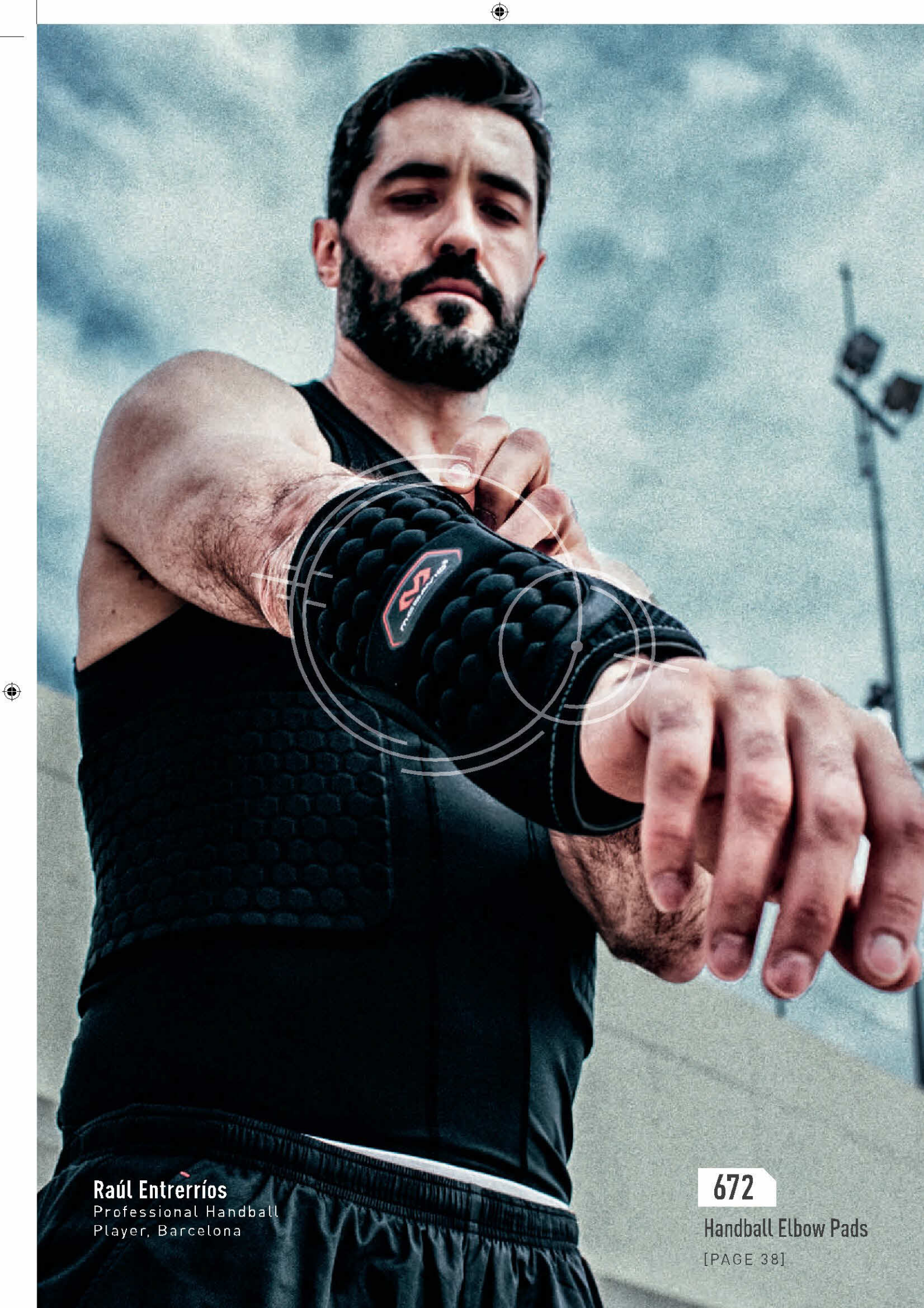
26-27 cm
10-11"

XL

28-31 cm
11-12"

XXL

+31 cm
+12"



Raúl Entreríos
Professional Handball
Player, Barcelona

672

Handball Elbow Pads

[PAGE 38]

4201

VOW™

Knee Wrap with Stays

[PAGE 55]



SPORTMED®

PROTECTION SELECTION

Choose from our THREE+ LEVELS OF PROTECTION:

1

PRIMARY
LEVEL 1

BEST FOR:

- Minor pain and sprains
- Arthritis, bursitis and tendonitis

2

ADVANCED
LEVEL 2

BEST FOR:

- Minor to moderate ligament instabilities
- Swelling, recovering sprains
- Pain relief from chronic conditions

3

MAXIMUM
LEVEL 3

BEST FOR:

- Moderate to major instabilities and pain
- Proactive injury prevention
- Post-surgical joint protection

3+

MAXIMUM+
LEVEL 3+

BEST FOR:

- Major joint instabilities
- Post-surgical joint protection
- Therapeutic recovery

THE LIGHTS ARE ALWAYS ON

The McDavid lab lights never go dark, as we never stop searching for ways to improve every athlete's performance, protection and prevention. 2019 is no exception and our SportMed® line is where McDavid made our exceptional name. Check out exciting new offerings such as X For Fitness gear designed for the rigors of extreme fitness and obstacle racing, plus the PHANTOM & STEALTH high-performance ankle braces. Keeping the lights on.

42

ARM / WRIST
BRACES & SUPPORTS

49

UPPER LEG
THIGHT WRAPS & SHORTS

64

ANKLES
BRACES & SUPPORTS

46

BACK / WAIST
BRACES & SUPPORTS

50

KNEE
BRACES & SUPPORTS

75

ICE RECOVERY
TRUE ICE & PACKS



3 LEVEL 3: MAXIMUM PROTECTION

454 Wrist Brace / Adjustable

BEST FOR > Relieving pain from conditions such as carpal tunnel, arthritis, tendonitis and sprains

- Medical quality splint adds further support and stability
- Hook and loop closures for custom fit and comfort
- Best for back-to-work and play rehab
- Right and left specific

COLOURS > Black

Contents: 100% Latex-free 3.2mm Neoprene [CR] - Exclusive of binding/straps/cover fabric

SIZE:

ONE SIZE



1 LEVEL 1: PRIMARY PROTECTION

452 Wrist Strap / Adjustable

BEST FOR > Wrist support, helping to promote healing and relieve pain

- 4-way stretch provides thermal/compression therapy
- Hook and loop closures for custom fit and comfort
- Flat-seam construction for ultra comfort and contouring fit
- Fits left or right

COLOURS > Black

Contents: 100% Latex-free 3.2mm Neoprene [CR] - Exclusive of strap/cover fabric

SIZE:

ONE SIZE



1 LEVEL 1: PRIMARY PROTECTION

451 Wrist Wrap / Adjustable

BEST FOR > Wrist support, helping to promote healing and relieve pain

- 4-way stretch provides thermal/compression therapy
- Hook and loop closures for custom fit and comfort
- Fits left or right

COLOURS > Black

Contents: 100% Latex-free 3.2mm Neoprene [CR] - Exclusive of binding/strap/cover fabric

SIZE:

ONE SIZE



2 LEVEL 2: ADVANCED PROTECTION

NEW **458** Thumb Stabilizer

BEST FOR Immobilizing thumb joint to aid in injury prevention/recovery

- Latex-free neoprene for thermal compression
- Adjustable wrist strap for customized fit/support
- Protective and preventive rigid internal stays
- Fits left or right

COLOURS Black

Contents: 62% Nylon/38% Spandex (elastane)



SIZE:

Measure around wrist:

S/M

-18 cm
-7"

L/XL

+18 cm
+7"

2 LEVEL 2: ADVANCED PROTECTION

455 Wrist Support

BEST FOR Minor support that helps to promote healing and relieve pain

- Multi-sport use.
- Ergonomically designed with McDavid exclusive branded liner
- Latex-free neoprene provides thermal/compression therapy
- Hook and loop closures for custom fit and comfort
- Fits left or right

COLOURS Black

Contents: 100% Latex-free 3,2 mm Neoprene [CR] - Exclusive of binding/strap/cover fabric



SIZE:

Measure around wrist:

M

-16 cm
-6"

L

+16-21 cm
+6-8"

1 LEVEL 1: PRIMARY PROTECTION

513 Wrist Sleeve / Adjustable / Elastic

BEST FOR Support, pain relief and to promote healing

- Mild compression
- Hook and loop closures for custom fit and comfort
- Fits left or right Flat-seam construction for ultra comfort and contouring fit
- Fits left or right

COLOURS Black

Contents: 65% Polyester / 25% Rubber / 10% Nylon



SIZE:

Measure around wrist:

S/M

-18 cm
-7"

L/XL

+18 cm
+7"



2 LEVEL 2: ADVANCED PROTECTION

489 Tennis Elbow Strap with Pads

BEST FOR Helping to relieve painful tennis/golf elbow symptoms through targeted pressure

- Dual Sorbothane® pads provide targeted, pain-relieving pressure
- Latex-free, neoprene construction provides thermal/compression therapy and soft tissue support
- Adjustable hook and loop closure for secure fit and comfort
- Flat-seam construction for ultra comfort and contouring fit
- Fits left or right

COLOURS Black

Contents: 100% Latex-free 1.5mm Neoprene (CR) - Exclusive of binding/strap/pads/cover fabric



SIZE:

Measure around elbow:

S

20-24 cm
8-9.5"

M

24-28 cm
9.5-11"

L

28-30 cm
11-12"

2 LEVEL 2: ADVANCED PROTECTION

486 Tennis Elbow Strap / Adjustable

BEST FOR Soft tissue support to help relieve painful tennis/golf elbow symptoms

- Adjustable hook and loop cinch strap for direct tendon pressure and custom support
- Fits left or right

COLOURS Black

Contents: 100% Latex-free 3.2mm Neoprene (CR) - Exclusive of strap/cover fabric



SIZE:

ONE SIZE

2 LEVEL 2: ADVANCED PROTECTION

485 Tennis Elbow Support with Strap

BEST FOR Soft tissue support to help relieve painful tennis/golf elbow symptoms

- Adjustable hook and loop cinch strap for direct tendon pressure and support
- Anatomical design for added comfort
- Exclusive 5 needle stitch for a flatter, cleaner and stronger seam
- Fits left or right

COLOURS Black

Contents: 100% Latex-free 3.2mm Neoprene (CR) - Exclusive of binding/strap/cover fabric



SIZE:

Measure around elbow:

S

20-24 cm
8-9.5"

M

24-28 cm
9.5-11"

L

28-30 cm
11-12"

XL

30-36 cm
12-14"



2 LEVEL 2: ADVANCED PROTECTION

5130 Elbow Sleeve / 4-way Elastic with Gel Buttresses

BEST FOR >> Breathable relief from arthritis, bursitis and tendonitis, especially golfer's elbow and tennis elbow

- Also designed for exceptional function in managing olecranon bursitis
- Bi-lateral gel buttresses provide soothing targeted compression
- 4-way stretch elastic material for increased compression and fit without heat retention
- Ideal for those with neoprene allergies
- Fits left or right

COLOURS >> Black

Contents: 62% Nylon / 38% Elastane

SIZE:

Measure around elbow:

S	M	L	XL
20-24 cm 8-9.5"	24-28 cm 9.5-11"	28-30 cm 11-12"	30-36 cm 12-14"



1 LEVEL 1: PRIMARY PROTECTION

512 Elbow Sleeve / Elastic

BEST FOR >> Support, helping to relieve pain and promote healing

- Mild compression for soft tissue support without heat retention
- Ideal for those with neoprene allergies
- Pulls on with ease
- Fits left or right

COLOURS >> Black

Contents: 65% Polyester / 25% Rubber / 10% Nylon

SIZE:

Measure around elbow:

S	M	L	XL
20-24 cm 8-9.5"	24-28 cm 9.5-11"	28-30 cm 11-12"	30-36 cm 12-14"



1 LEVEL 1: PRIMARY PROTECTION

481 Elbow Support

BEST FOR >> Minor support helping to relieve muscle strains/pulls and promotes healing

- Latex-free neoprene construction provides thermal/compression therapy and soft tissue support to promote healing
- Outer heavy-duty nylon for durability
- Fits left or right

COLOURS >> Black

Contents: 100% Latex-free mm Neoprene [CR] – Exclusive of binding/pad/cover fabric

SIZE:

Measure around elbow:

S	M	L	XL
20-24 cm 8-9.5"	24-28 cm 9.5-11"	28-30 cm 11-12"	30-36 cm 12-14"





HIGH PERFORMANCE NEOPRENE

Good news for neoprene lovers and neoprene wannabes: McDavid High Performance Neoprene. Superior **NON-PETROL-BASED LIMESTONE CR NEOPRENE IS 100% LATEX-FREE.**

The benefits go far beyond your latex sensitivity. High Performance Neoprene utilizes **MICRO-CELL** structure that delivers superior compression, greater therapeutic insulation and extra-light comfort. It's just McDavid enhancing and elevating the norm to next-level superiority... it's what we do.

1 LEVEL 1: PRIMARY PROTECTION

463 Shoulder Wrap

BEST FOR Helping to relieve pain and promote healing for non-specific shoulder injuries, arthritis and bursitis

- Easy-to-wear support helps decrease pain from pulls and strains
- Adjustable hook and loop closure straps apply direct compression to your AC joint
- Latex-free neoprene provides thermal/compression therapy
- Simple, light design makes it perfect for extended wear
- Fits left or right

COLOURS Black

Contents: 100% Latex-free Neoprene (CR) - Exclusive of binding/straps/cover fabric



SIZE:

	S	M	L
Measure around chest:	79-91 cm 30-36"	91-107 cm 36-42"	107-127 cm 42-50"

1 LEVEL 1: PRIMARY PROTECTION

491 Waist Trimmer

BEST FOR Core support and as part of a comprehensive weight loss program

- Helps relieve minor back pain and/or may enhance weight loss efforts via therapeutic heat
- Cushions, compresses, and supports lower back and abdominal muscles
- Latex-free neoprene construction for thermal/compression therapy and soft tissue support
- Adjustable hook and loop closures for custom fit and comfort
- Non-slip neoprene inner layer maintains positioning

COLOURS Black

Contents: 100% Latex-free Neoprene (CR) - Exclusive of strap/cover fabric



SIZE:

ONE SIZE



3 LEVEL 3: MAXIMUM PROTECTION

493 Back Stabilizer

BEST FOR Core support and helping to relieve non-specific back pain

- Protects from strains and pulls with 6 steel stays strategically positioned for maximum support
- Vented elastic side panels feature hook and loop closures and neoprene wrap for custom fit and comfort
- Latex-free neoprene construction for thermal/compression therapy and soft tissue support

COLOURS Black

Contents: Mesh: 90% Nylon / 10% Lycra® (elastane)

Panel: 62% Polyester / 38% Rubber



SIZE:

	S	M	L	XL
Measure around waist:	61-81 cm 24-32"	69-107 cm 27-42"	91-132 cm 36-52"	117-152 cm 46-60"

2 LEVEL 2: ADVANCED PROTECTION

495 Back Support

BEST FOR Core support and helping to relieve non-specific back pain

- Helps relieve minor back pain and/or 5 steel stays provide rigid protection for weakness and minor instabilities
- Contoured and breathable construction for all-day comfort, compression and soft tissue support
- Adjustable hook and loop closures for comfortable, secure fit

COLOURS Black

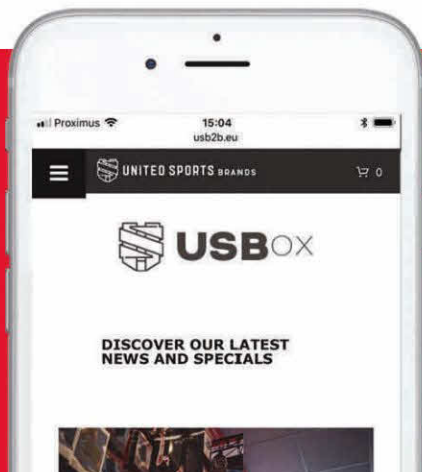
Contents mesh: 90% Nylon / 10% Lycra® (elastane)

Panel: 62% Polyester / 38% Rubber



SIZE:

	S	M	L	XL
Measure around waist:	61-81 cm 24-32"	69-107 cm 27-42"	91-132 cm 36-52"	117-152 cm 46-60"



ORDERING ON-THE-GO?

DISCOVER

OUR NEW B2B PORTAL

WWW.USB2B.EU

4197

ELITE
Bio-Logix™

Ankle Braces

[PAGE 68]





2 LEVEL 2: ADVANCED PROTECTION

478 Thigh Wrap / Adjustable

BEST FOR Helping to reduce hamstring and quad strains/pulls; aids recovery

- Latex-free neoprene provides thermal/compression therapy
- Outer heavy-duty nylon fabric for durability
- Fully adjustable with hook and loop closures for custom fit
- Fits left or right

COLOURS Black

Contents: 100% Latex-free 3.2mm Neoprene (CR) - Exclusive of straps/cover fabric

SIZE:

ONE SIZE



1 LEVEL 1: PRIMARY PROTECTION

471 Thigh Sleeve

BEST FOR Helping to reduce hamstring and quad strains/pulls; aids recovery

- Exclusive 5-needle stitch for a flatter, cleaner and stronger seam
- Latex-free neoprene provides thermal/compression therapy
- Fits left or right

COLOURS Black

Contents: 100% Latex-free 3.2mm Neoprene (CR) - Exclusive of binding/cover fabric

SIZE:

	S	M	L	XL
Measure around thigh:	46-51 cm 18-20"	51-56 cm 20-22"	56-64 cm 22-25"	64-71 cm 25-28"



2 LEVEL 2: ADVANCED PROTECTION

479 Neoprene Shorts with Adjustable Drawstring

BEST FOR Minor to moderate support for thighs, hamstrings, groin and glutes

- Latex-free neoprene provides thermal/compression therapy and support to thigh, hamstrings, groin and glutes
- Adjustable drawstring and low profile design provides comfort fit and feel
- Allows full range of motion
- Outer nylon fabric for added durability
- Beneficial for weight management

COLOURS Black

Contents: 100% Latex-free 1.5mm Neoprene CR - Exclusive of binding, drawstring and cover fabric

SIZE:

	S	M	L	XL	XXL
Measure around waist:	71-76 cm 28-30"	76-86 cm 30-34"	86-97 cm 34-38"	97-107 cm 38-42"	107-117 cm 42-46"





3+ LEVEL 3+: MAXIMUM PROTECTION+

4200 ELITE Bio-Logix™ Knee Brace

BEST FOR Pain relief and support for moderate knee instabilities and conditions

- Bio-Logix™ engineered semi-rigid lightweight and highly-supportive brace
- Over-molded integration of anatomical lateral/medial C-Supports for unique hinge bracing and continuity
- Self-adaptive Flex-Fit allows for full adjustability and custom-like comfort
- Fluid feel and natural range of motion via bi-lateral aluminum dual axis geared hinges
- Flex-Fit shin and thigh, wicking and washable lining pads with airflow channels
- Anti-Migration Straps for adjustable precision fit
- Innovative Sleeve-Lock Fit System compression sleeve wraps over brace exterior/straps adding support and fit
- Wear with or without included compression sleeve
- Anatomically specific for right or left knee

COLOURS Black

Contents: Brace: 45% ABS / 25% TPR / 5% PA / 2% TPU / 3% nylon / 5% POM / 15% metal

Sleeve Contents: 50% Nylon / 30% Polyester / 20% Spandex - Exclusive of trims

ISPO
AWARD WINNER



SIZE:

Measure around knee:

S	M	L	XL
31-33.7 cm 12.2-13.2"	33-35.6 cm 13-14"	34.9-37.5 cm 13.8-15"	36.8-39.4 cm 14.5-15.5"

Lateral / Medial C-Supports



Anti-migration straps



Sleeve-Lock System



Self-adaptive Flex-Fit





4200

ELITE
Bio-Logix™

Knee Braces

[PAGE 50]

Luka Karabatic

Handball World Champion,
France



5149

ELITE
ENGINEERED ELASTIC™ Knee
Support

[PAGE 53]



3 LEVEL 3: MAXIMUM PROTECTION

5149 ELITE ENGINEERED ELASTIC™ Knee Brace with Dual Wrap and Hinges

BEST FOR Minor to moderate support pain relief associated with ligament instabilities

- High-grade Engineered Elastics for therapeutic compression, circulation and comfort
- Major stability and protection with bilateral dual hinges
- Support and comfort doubled with adjustable dual wrap
- Secure contour design for no bunching and all-day comfort
- Gel buttress add comfort and protection
- Breathable and moisture-wicking with advanced weave pattern
- Quick on and quick off

COLOURS Black

Contents: 65% Nylon / 23% SBR Neoprene / 6% Polyester / 5% Spandex (elastane) / 1% CR Neoprene



SIZE:

Measure around knee

S	M	L	XL
31-33.5 cm 12-13.25"	33-35.5 cm 13-14"	35-37.5 cm 13.75-14.75"	36.5-39.5 cm 14.50-15.50"

2 LEVEL 2: ADVANCED PROTECTION

5147 ELITE ENGINEERED ELASTIC™ Knee Support with Dual Wrap and Stays

BEST FOR Minor to moderate support pain relief associated with ligament instabilities

- High-grade Engineered Elastics for therapeutic compression, circulation and comfort
- Added stability and protection with bilateral stabilizing side stays
- Support and comfort doubled with adjustable dual wrap
- Secure contour design for no bunching and all-day comfort
- Gel buttress adds comfort and protection
- Breathable and moisture-wicking with advanced weave pattern
- Quick on and quick off

COLOURS Black

Contents: 58% Nylon / 32% SBR Neoprene / 8% Spandex (elastane) / 2% CR Neoprene



SIZE:

Measure around knee

S	M	L	XL
31-33.5 cm 12-13.25"	33-35.5 cm 13-14"	35-37.5 cm 13.75-14.75"	36.5-39.5 cm 14.50-15.50"



VOW™

VERSATILE OVER WRAP System™

Another example of our **First On Last Off®** oath of greatness

McDavid presents **VOW**—the **Versatile Over Wrap System**. This is Our VOW to all athletes looking for **lightweight, ultra-flexible** joint therapy and support. **VOW** is efficient engineering and personally customizable to an athlete's preferences in compression levels and fit characteristics. **VOW** is **easy** and **quick** support that **wraps on** instead of pulls on. Want to wear it **over your pants**? Now you can. VOW features a wide range of support levels and varied configurations utilizing compression only, stays, straps and/or hinges.



4205

VOW™

Knee Wrap with Hinges and Straps

[PAGE 55]



3 LEVEL 3: MAXIMUM PROTECTION

4205 VOW™ Knee Wrap with Hinges and Straps

BEST FOR Versatile and targeted support for a variety of patella tracking issues and high-level support for medial and lateral stability and injury recovery

- Injury prevention and recovery greatly enhanced via bilateral polycentric stability hinges
- Easy, simple, quick wrap-on design, even goes over pants
- Compression and support in a lightweight, flexible design
- Versatile compression level and fit preferences due to Over Wrap System
- Top over wrap manages muscle support and compression
- Bottom over wrap isolates and stabilizes patella
- Engineered top and bottom 360° stretch/non-stretch integrated adjustable straps assure personalized fit
- Fits left or right

COLOURS Black

Contents: 100% Latex-free 1.5mm Neoprene [CR] - Exclusive of binding/straps/cover fabric

SIZE:	S	M	L	XL
Measure around knee:	32.4-36.2 cm 12.75-14.25"	34.9-38.7 cm 13.75-15.25"	38.1-42.5 cm 15-16.75"	41.9-47 cm 16.5-18.5"



2 LEVEL 2: ADVANCED PROTECTION

4203 VOW™ Knee Wrap with Stays and Straps

BEST FOR Versatile and targeted support for a variety of patella tracking issues and to aid in recovery from chondromalacia, patellar subluxation, and tendonitis

- Lateral support and fit enhanced by integrated spring steel stays (2 per side) and top/bottom strap system
- Easy, simple, quick wrap-on design, even goes over pants
- Compression and support in a lightweight, flexible design
- Versatile compression level and fit preferences due to Over Wrap System
- Top over wrap manages muscle support and compression
- Bottom over wrap isolates and stabilizes patella
- Engineered top and bottom 360° stretch/non-stretch integrated adjustable straps assure personalized fit
- Fits left or right

COLOURS Black

Contents: 100% Latex-free 1.5mm Neoprene [CR] - Exclusive of binding/straps/cover fabric

SIZE:	S	M	L	XL
Measure around knee:	32.4-36.2 cm 12.75-14.25"	34.9-38.7 cm 13.75-15.25"	38.1-42.5 cm 15-16.75"	41.9-47 cm 16.5-18.5"



2 LEVEL 2: ADVANCED PROTECTION

4201 VOW™ Knee Wrap with Stays

BEST FOR Versatile and targeted support for a variety of patella tracking issues and moderate support from pain associated with tendonitis

- Lateral support enhanced by integrated spring steel stays (2 per side)
- Easy, simple, quick wrap-on design, even goes over pants
- Compression and support in a lightweight, flexible design
- Versatile compression level and fit preferences due to Over Wrap System
- Top over wrap manages fit, muscle support and compression
- Bottom over wrap isolates and stabilizes patella
- Comfort and range of motion increased with strap-free back
- Fits left or right

COLOURS Black

Contents: 100% Latex-free 1.5mm Neoprene [CR] - Exclusive of binding/straps/cover fabric

SIZE:	S	M	L	XL
Measure around knee:	32.4-36.2 cm 12.75-14.25"	34.9-38.7 cm 13.75-15.25"	38.1-42.5 cm 15-16.75"	41.9-47 cm 16.5-18.5"



429

Knee Brace with Polycentric Hinges

[PAGE 57]





3 LEVEL 3: MAXIMUM PROTECTION

429X Knee Brace with Polycentric Hinges and Cross Straps

BEST FOR High-level support; improving medial and lateral stability, helping reduce injury and assist recovery

- Elastic crossing straps for enhanced compression and added rotational and collateral ligament support
- Bi-lateral geared polycentric hinges for stability and free movement
- Engineered top and bottom straps assure personalized fit
- Open 360° padded buttress isolates and supports the patella
- Bound edges prevent irritation
- Perforated back panel provides heat and moisture management and all-around comfort
- Latex-free neoprene provides thermal compression
- Fits left or right

COLOURS Black

Contents: 100% Latex-free 4.8mm Neoprene [CRI] - Exclusive of binding/straps/cover fabric/hinges

SIZE:	S	M	L	XL	XXL
Measure around Knee:	30-36 cm 12-14"	36-38 cm 14-15"	38-43 cm 15-17"	43-51 cm 17-20"	51-56 cm 20-22"



3 LEVEL 3: MAXIMUM PROTECTION

429 Knee Brace with Polycentric Hinges

BEST FOR High-level support; improving medial and lateral stability, helping reduce injury and assist recovery

- Bi-lateral geared polycentric hinges for stability and free movement
- Engineered top and bottom straps assure personalized fit
- Latex-free neoprene provides thermal compression
- Open 360° padded buttress isolates and supports the patella
- Bound edges prevent irritation
- Perforated back panel provides heat and moisture management and all-around comfort
- Fits left or right

COLOURS Black

Contents: 100% Latex-free 4.8mm Neoprene [CRI] - Exclusive of binding/straps/cover fabric/hinges

SIZE:	S	M	L	XL	XXL
Measure around Knee:	30-36 cm 12-14"	36-38 cm 14-15"	38-43 cm 15-17"	43-51 cm 17-20"	51-56 cm 20-22"



3 LEVEL 3: MAXIMUM PROTECTION

422 Knee Brace with Dual Disk Hinges

BEST FOR Moderate medial and lateral support for improving stability; aids in recovery

- No gears: each sidearm is independently articulated with cushioned hyperextension stops.
- Engineered top and bottom straps assure personalized fit
- Latex-free neoprene provides thermal compression
- Open 360° padded buttress isolates and supports the patella
- Bound edges prevent irritation
- Perforated back panel provides heat and moisture management and all-around comfort
- Exterior layer of nylon fabric for durability
- Fits left or right

COLOURS Black

Contents: 100% Latex-free 4.8mm Neoprene [CRI] - Exclusive of binding/straps/cover fabric/hinges

SIZE:	S	M	L	XL	XXL
Measure around Knee:	30-36 cm 12-14"	36-38 cm 14-15"	38-43 cm 15-17"	43-51 cm 17-20"	51-56 cm 20-22"





NEW **LOOPS**
FOR EASY
ON/OFF

WHOO-P-WORTHY

LOOPS and **TABS** added to the sides of most McDavid knee braces...big whoop, right? Heck yeah. These are the small things that excite us—the smart **INNOVATIONS** that simply make pulling our brace on **EASIER** and **FASTER**. That's a worthy whoop.



NEW **TABS**



2 LEVEL 2: ADVANCED PROTECTION

425 Knee Support with Stays and Cross Straps

BEST FOR >> Moderate support helping to relieve symptoms and aid recovery from chondromalacia, patellar subluxation and tendonitis

- Reinforced spring steel stays offer enhanced medial-lateral confidence
- Elastic cross straps for enhanced compression and added rotational and collateral ligament support
- Top and bottom closures ensure outstanding fit
- Engineered top and bottom straps assure personalized fit
- Open 360° padded buttress isolates and supports the patella
- Perforated back panel provides heat and moisture management and all-around comfort
- Latex-free neoprene provides thermal compression
- Fits left or right

COLOURS >> Black

Contents: 100% Latex-free 4.8mm Neoprene (CR) - Exclusive of binding/straps/cover fabric

SIZE:

Measure around Knee:

S

30-36 cm
12-14"

M

36-38 cm
14-15"

L

38-43 cm
15-17"

XL

43-51 cm
17-20"

XXL

51-56 cm
20-22"



2 LEVEL 2: ADVANCED PROTECTION

421 Knee Support with Stays

BEST FOR >> Moderate support helping to relieve symptoms and aid recovery from chondromalacia, patellar subluxation and tendonitis

- Padded buttress supports the patella
- Reinforced support with spring steel stays
- Elastic hook and loop straps ensure outstanding fit
- Latex-free neoprene provides thermal compression
- Exterior layer of nylon fabric for durability
- Fits left or right

COLOURS >> Black

Contents: 100% Latex-free 4.8mm Neoprene (CR) - Exclusive of binding/straps/cover fabric

SIZE:

Measure around Knee:

S

30-36 cm
12-14"

M

36-38 cm
14-15"

L

38-43 cm
15-17"

XL

43-51 cm
17-20"

XXL

51-56 cm
20-22"



2 LEVEL 2: ADVANCED PROTECTION

419 Knee Support / Adjustable

BEST FOR >> Reducing symptoms of patellar tendonitis (runner's / jumper's knee), Osgood-Schlatter disease and patella tracking

- Movable padded buttresses for added compression and pain relief
- Adjustable hook and loop closure for custom fit
- Flat-seam construction for ultra comfort and contouring fit
- Latex-free neoprene provides thermal/compression therapy
- Fits left or right
- **EXCLUSIVE DESIGN**

COLOURS >> Black

Contents: 100% Latex-free 3.2mm Neoprene (CR) - Exclusive of binding/straps/cover fabric

SIZE:

Measure around Knee:

S / M

30-38 cm
12-15"

L / XL

38-51 cm
15-20"



2 LEVEL 2: ADVANCED PROTECTION

414 Knee Strap / Patella

BEST FOR >> Reducing symptoms of patellar tendonitis (runner's/jumper's knee), Osgood-Schlatter disease and patella tracking

- Tubular, non-slip buttress applies constant uniform compression at the patellar tendon
- Adjustable hook and loop closure for custom fit
- Fits left or right

COLOURS >> Black

Contents: 100% Latex-free 3.2mm Neoprene (CR) - Exclusive of binding/cover fabric

SIZE:

ONE SIZE



2 LEVEL 2: ADVANCED PROTECTION

4103 ELITE RUNNERS THERAPY Iliotibial Band Strap

BEST FOR >> Therapeutic relief from the symptoms of moderate IT band pain

- Adjustable strap for controllable compression fit and increased support pressure for IT Band pain relief
- Contoured support pad targeted to IT Band provides healing pressure
- Ergonomic, lightweight design for all-workout comfort and fit
- Slip resistant lined neoprene keeps strap in position during muscle expansion and contraction
- Fits left or right

COLOURS >> Black

Contents: 55% Neoprene / 20% Silicone / 10% Nylon / 10% TPE / 5% Polyester

SIZE:

ONE SIZE





2 LEVEL 2: ADVANCED PROTECTION

5125 Knee Sleeve / 4-way Elastic with Gel Buttress

BEST FOR > Moderate support and relief from pain associated with arthritis, bursitis and tendonitis

- 4-way stretch elastic material for increased compression and fit without heat retention
- Gel buttress targets soft tissue and patella support
- Ideal for those with neoprene allergies
- Fits left or right

COLOURS > Black

Contents: 62% Nylon / 38% Elastane

SIZE:

Measure around Knee:

S

30-36 cm
12-14"

M

36-38 cm
14-15"

L

38-43 cm
15-17"

XL

43-51 cm
17-20"



2 LEVEL 2: ADVANCED PROTECTION

5116 Knee Sleeve / 4-way Elastic with Gel Buttress and stays

BEST FOR > Moderate support and relief from pain associated with arthritis, bursitis and tendonitis

- 4-way stretch elastic material engineered for increased compression and fit without heat retention
- Reinforced with spring steel stays for added support and lateral movement
- Gel buttress targets soft tissue and patella support
- Ideal for those with neoprene allergies
- Fits left or right

COLOURS > Black

Contents: 62% Nylon / 38% Elastane

SIZE:

Measure around Knee:

S

30-36 cm
12-14"

M

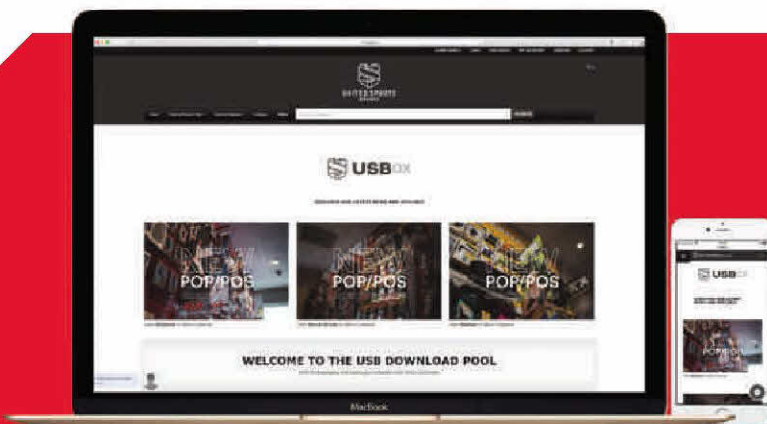
36-38 cm
14-15"

L

38-43 cm
15-17"

XL

43-51 cm
17-20"



PLACING ORDERS HAVE NEVER BEEN EASIER

DISCOVER

OUR NEW B2B PORTAL

WWW.USB2B.EU



HIGH PERFORMANCE NEOPRENE

Superior **NON-PETROL-BASED LIMESTONE CR NEOPRENE IS 100% LATEX-FREE.**

The benefits go far beyond your latex sensitivity. High Performance Neoprene utilizes **MICRO-CELL** structure that delivers superior compression, greater therapeutic insulation and extra-light comfort. It's just McDavid enhancing and elevating the norm to next-level superiority... it's what we do.



1 LEVEL 1: PRIMARY PROTECTION

401 Knee Sleeve

BEST FOR Minor support helping to relieve pain and promote healing of tendonitis, bursitis, arthritis and other non-specific knee conditions

- Exclusive 5-needle stitch for a flatter, cleaner and stronger seam
- Seamless back-of-knee and anatomical design for added comfort
- Latex-free neoprene provides thermal/compression therapy
- Outer heavy-duty nylon fabric for durability
- Fits left or right

COLOURS Black

Contents: 100% Latex-free 3.2mm Neoprene (CR) - Exclusive of binding/cover fabric

SIZE:

Measure around Knee:

S	M	L	XL	XXL
30-36 cm 12-14"	36-38 cm 14-15"	38-43 cm 15-17"	43-51 cm 17-20"	51-56 cm 20-22"



1 LEVEL 1: PRIMARY PROTECTION

402 Knee Support with Open Patella

BEST FOR Minor support helping to relieve pain and promote healing of tendonitis, bursitis, arthritis and other non-specific knee conditions

- Open knee design for added comfort around the patella
- Exclusive 5-needle stitch for a flatter, cleaner and stronger seam
- Seamless back-of-knee and anatomical design for added comfort
- Latex-free neoprene provides thermal/compression therapy
- Outer heavy-duty nylon fabric for durability
- Fits left or right

COLOURS Black

Contents: 100% Latex-free 3.2mm Neoprene (CR) - Exclusive of binding/cover fabric

SIZE:

Measure around Knee:

S	M	L	XL	XXL
30-36 cm 12-14"	36-38 cm 14-15"	38-43 cm 15-17"	43-51 cm 17-20"	51-56 cm 20-22"





1 LEVEL 1: PRIMARY PROTECTION

409 Knee Wrap / Adjustable with Open Patella

BEST FOR ▶ Minor support helping to relieve pain and promote healing of tendonitis, bursitis, arthritis and other non-specific knee conditions

- Adjustable hook and loop closure for custom fit
- Open knee design for added comfort around the patella
- Latex-free neoprene provides thermal compression
- Fits left or right

COLOURS ▶ Black

Contents: 100% Latex-free 3,2 mm Neoprene [CR] - Exclusive of straps / cover fabric

SIZE:

ONE SIZE



1 LEVEL 1: PRIMARY PROTECTION

510 Knee Sleeve / Elastic

BEST FOR ▶ Minor support and pain relief from arthritis, bursitis and tendonitis

- Provides compression and soft tissue support
- Elastic construction breathes for cool knees
- Ideal for those with neoprene allergies
- Easy pull-on sleeve
- Fits left or right

COLOURS ▶ Black

Contents: 65% Polyester / 25% Rubber / 10% Nylon

SIZE:

Measure around Knee:

S

30-36 cm
12-14"

M

36-38 cm
14-15"

L

38-43 cm
15-17"

XL

43-51 cm
17-20"



1 LEVEL 1: PRIMARY PROTECTION

441 Calf Sleeve

BEST FOR Reducing pain associated with calf strains, shin splints and varicose veins; aids recovery

- Contoured, pull-on, latex-free thermal/compression therapy and soft tissue support
- Exclusive 5-needle stitch for a flatter, cleaner and stronger seam
- Outer heavy-duty nylon fabric for durability
- Fits left or right

COLOURS Black

Contents: 100% Latex-free 3.2mm Neoprene (CR) - Exclusive of cover fabric

SIZE:

Measure around calf:

S

30-36 cm
12-14"

M

36-38 cm
14-15"

L

38-43 cm
15-17"

XL

43-46 cm
17-18"



2 LEVEL 2: ADVANCED PROTECTION

4102 ELITE RUNNERS THERAPY Shin Splint Sleeve

BEST FOR Therapeutic relief from moderate shin splint pain with increased muscle support

- Dual compression anatomical design for enhanced pain relief and support
- Contoured support pads targeted to shin provides healing pressure [2 pads—adjustable/removable]
- Ergonomic, lightweight design for all-workout comfort and fit
- Moisture-wicking, breathable fabric with 4-way stretch
- Fits left or right

COLOURS Black

Contents: 46% Nylon / 11% Polyester / 23% TPU / 20% EVA

SIZE:

Measure around calf

S

32-34.5 cm
12.5-13.5"

M

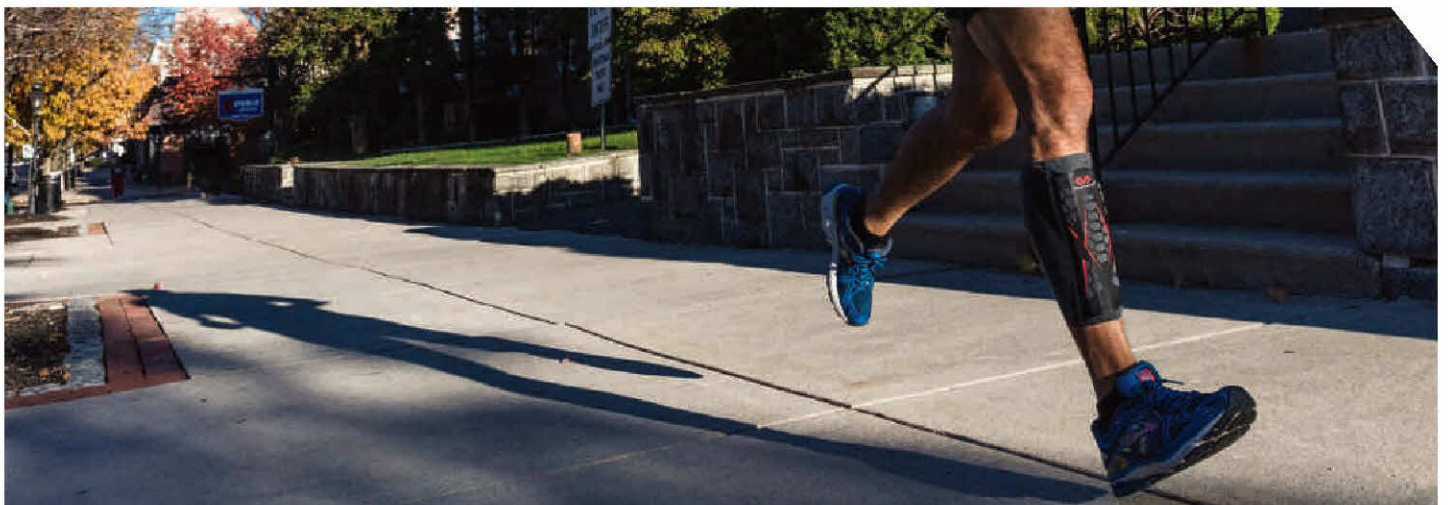
34.5-38 cm
13.5-15"

L

39.5-43 cm
15.5-17"

XL

44.5-48 cm
17.5-19"





PHANTOM x STEALTH

Free your ankles from bulky lace-up braces and experience performance and confidence like never before. The new McDavid **PHANTOM** is **REVOLUTIONIZING THE ANKLE BRACE** with a streamlined, **EASY-ON-EASY-OFF** design that's **33% LIGHTER** than traditional braces. Plus, the new **STEALTH** is a low-profile ankle brace specifically **DESIGNED TO BE WORK WITH CLEATS**. It's time to join the Ankle Revolution.



3+ LEVEL 3+: MAXIMUM PROTECTION+

NEW **4305** Phantom 3+ Ankle Brace

BEST FOR Lightweight ankle support and pain relief from various moderate to major instabilities and conditions, or pure prevention – innovative low-profile design provides easy-to-use high level 3+ of support

- No bulky and time-consuming laces!
- 30% Lighter than traditional lace-up & strap braces (only 92 gram)
- Easy direct rear-entry fit with quick adjustable back closures
- Thin, low profile fit for today's tight streamlined shoes
- Advanced Bio-Logix™ anatomically contoured flex-support stirrup stays
- Vertical tension stirrup straps maximize medial/lateral stability
- Figure-8 straps enhance joint stability and compression support
- Rubber-grip-straps optimize no-slip grip with brace & within shoe
- Helps prevent and recover from common ankle sprains
- Fits left or right ankle

COLOURS Black

Contents: 80% Nylon / 20% Polyester

SIZE:

EU Shoe Size:

XS/S

-41

M/L

41-44

XL/XXL

44+

UK Shoe Size:

-8

7.5-10.5

10.5+

Measure around ankle:

19-21.6 cm

21.6-24.1

24.1-27.9

7.5-8.5"

8.5-9.5"

9.5-11"

Lighter than traditional lace-up braces



Rubber-grip-straps



Low-profile design



Ideal for low volume cleats





2+ LEVEL 2+: ADVANCED PROTECTION+

NEW 4303 Phantom 2+ Ankle Brace

BEST FOR Lightweight ankle support and pain relief from various moderate instabilities and conditions, or pure prevention – innovative low-profile design provides easy-to-use level 2+ of support

- No bulky and time-consuming laces!
- 32% Lighter than traditional lace-up & strap braces only 85 gram
- Easy direct rear-entry fit with quick adjustable back closures
- Thin, low profile fit for today's tight streamlined shoes
- Advanced Bio-Logix™ anatomically contoured flex-support stirrup stays
- Vertical tension stirrup straps maximize medial/lateral stability
- Thin TPU laminated adjustable full-wrap compression top strap
- Rubber-grip-straps optimize no-slip grip with brace & within shoe
- Helps prevent and recover from common ankle sprains
- Fits left or right ankle

COLOURS Black

Contents: Contents: 80% Nylon / 20% Polyester

SIZE:

EU Shoe Size:

UK Shoe Size:

Measure around ankle:

XS/S

-41

-8

19-21.6 cm
7.5-8.5"

M/L

41-44

7.5-10.5

21.6-24.1
8.5-9.5"

XL/XXL

44+

10.5+

24.1-27.9
9.5-11"

2 LEVEL 2: ADVANCED PROTECTION

NEW 4302 Phantom 2 Ankle Brace

BEST FOR Lightweight ankle support and pain relief from various moderate instabilities and conditions, or pure prevention – innovative low-profile design provides easy-to-use level 2 of support

- No bulky and time-consuming laces!
- 35% Lighter than traditional lace-up & strap braces only (75 gram)
- Easy step thru rear-entry fit with quick adjustable back closure
- Thin, low profile fit for today's tight streamlined shoes
- Advanced Bio-Logix™ anatomically contoured flex-support stays
- Rubber-grip-bottom optimizes no-slip grip within shoe
- Rubber-grip straps optimize no-slip grip with brace & within shoe
- Helps prevent and recover from common ankle sprains
- Fits left or right ankle

COLOURS Black

Contents: Contents: 80% Nylon / 20% Polyester



SIZE:

EU Shoe Size:

UK Shoe Size:

Measure around ankle:

XS/S

-41

-8

19-21.6 cm
7.5-8.5"

M/L

41-44

7.5-10.5

21.6-24.1
8.5-9.5"

XL/XXL

44+

10.5+

24.1-27.9
9.5-11"



3+ LEVEL 3+: MAXIMUM PROTECTION+

NEW 4314 Stealth Cleat 3+ Ankle Brace

BEST FOR » Lightweight ankle support and pain relief from various moderate instabilities and conditions, or pure prevention – minimal coverage ideal for low volume tight fitting cleats and shoes

- No bulky and time-consuming laces!
- 40% Lighter than traditional lace-up & strap braces only 78 gram
- Easy step thru rear-entry fit with quick adjustable back closure
- Material free forefoot for the tightest low volume cleats & shoes
- Advanced Bio-Logix™ anatomically contoured flex-support stays
- Vertical tension stirrup straps maximize medial/lateral stability
- Figure-8 straps enhance joint stability and compression support
- Rubber-grip straps optimize no-slip grip with brace & within shoe
- Thin full-wrap compression support top strap
- Helps prevent and recover from common ankle sprains
- Anatomically specific for right or left ankle

COLOURS » Black

Contents: Molded Parts: 95% Polypropylee / 5% Glassfiber; **Soft Parts:** 50% Polyester / 50% PE

SIZE:

	S	M	L	XL
EU Shoe Size:	37.5-39	40-43	43.5-44.5	45-48.5
UK Men's Shoe Size:	5-6.5	7-8.5	9-10	11-13.5
Measure around ankle:	20.3-21.6 cm 8-8.5"	21.6-22.9 cm 8.5-9"	22.9-24.1 cm 9-9.5"	24.1-25.4 cm 9.5-10"

2+ LEVEL 2+: ADVANCED PROTECTION

NEW 4311 Stealth Cleat 2+ Ankle Brace

BEST FOR » Lightweight ankle support and pain relief from various moderate instabilities and conditions, or pure prevention – minimal coverage ideal for low volume tight fitting cleats shoes

- No bulky and time-consuming laces!
- 40% Lighter than traditional lace-up & strap braces (only 78 gram)
- Easy step thru rear-entry fit with quick adjustable back closure
- Material free forefoot for the tightest low volume cleats & shoes
- Advanced Bio-Logix™ anatomically contoured flex-support stays
- Figure-8 straps enhance joint stability and compression support
- Rubber-grip straps optimize no-slip grip with brace & within shoe
- Thin TPU laminated adjustable full-wrap compression support top strap
- Helps prevent and recover from common ankle sprains
- Fits left, or right ankle

COLOURS » Black

Contents: 80% Nylon / 20% Polyester

SIZE:

	S	M	L	XL
EU Shoe Size:	37.5-39	40-43	43.5-44.5	45-48.5
UK Men's Shoe Size:	5-6.5	7-8.5	9-10	11-13.5
Measure around ankle:	20.3-21.6 cm 8-8.5"	21.6-22.9 cm 8.5-9"	22.9-24.1 cm 9-9.5"	24.1-25.4 cm 9.5-10"



»NEW«

ANKLE REVOLUTION

4311

Stealth Cleat 2+ Ankle Brace

[PAGE 66]



Bio-Logix™

LOW PROFILE. LESS WEIGHT. MAX STABILITY. AMAZING COMFORT. Game-altering technology. This refined combo of **RIGID** and **SOFT** materials creates precision semi-rigid support with **SELF-ADAPTIVE FIT** and Body-In-Motion flex. The C-Link Frame brings medial and lateral hinges into **ANATOMIC HARMONY**. The Anti-Migration Strap System delivers fantastic range of **ADJUSTMENT** and a **SUPPORTIVE** tie-in throughout. Underneath it all is the Sleeve-Lock™. Our unique compression sleeve provides advantages, like more support, comfort, fit, performance and recovery. In addition, the sleeve folds up, down and ultimately over the brace to **STREAMLINE** and **SECURE** like no other. Get Bio-Logix **FOR YOUR BIOLOGY.**



3+ LEVEL 3+: MAXIMUM PROTECTION+

4197 ELITE Bio-Logix™ Ankle Brace

BEST FOR Pain relief and support for various ankle instabilities and conditions.

- Bio-Logix™ engineered low profile, lightweight and highly-supportive brace
- Flex-Link hinge design for maximum ankle support and ultimate Body-In-Motion performance
- Quick-wrap closure secures ankle easily
- Ergonomic lateral and medial molded plastic internal support stays comfortably surround joint
- Anatomical support via molded TPU exoskeleton also provides further lateral stability
- Articulating plastic internal stirrup wraps upward from under-foot supporting below the ankle
- Natural flexion/extension and fluid movement provided by Soft Flex-Link hinge integration
- Integrated Figure-8 strap system and Heel-Lock Strap for max ankle inversion and over-extension stability
- Ankle joint and brace precisely aligned with contoured comfort memory foam
- Simple on/simple off rear access with forefoot sleeve and quick-wrap closure
- Anti-slip silicone sole creates stable in-shoe contact and enhanced performance
- Anatomically specific for right or left ankle

COLOURS Black

Contents: 35% SBR Neoprene / 25% TPU / 10% Polyester / 10% Microfiber / 15% Nylon / 5% Spandex - Exclusive of trims

SIZE:

	XS/S	M/L	XL/XXL
EU Shoe Size:	-41	41-44	44+
UK Shoe Size:	-8	7.5-10.5	10.5+
Measure around ankle:	19-21.6 cm 7.5-8.5"	21.6-24.1 8.5-9.5"	24.1-27.9 9.5-11"



Flex-Link Hinge



Quick-wrap closure



Molded TPU exoskeleton



Integrated Figure-8 strap system





ELITE

ENGINEERED ELASTIC™

is your number one choice when you're looking for **lightweight, no-bulk, slip-on support** for knees, Achilles tendons, ankles and wrists. Elite Engineered Elastics is precisely that—a **HIGHER GRADE** and **SUPERIOR DESIGNED ELASTIC**. With flat-knit technology we've created a more **form-fitting, breathable, comfortable** and **effective** support system. Give your joints the **ELITE TREATMENT**.



3 LEVEL 3: MAXIMUM PROTECTION

5146 ELITE ENGINEERED ELASTIC™

Ankle Brace with Figure-6 Strap and Stays

BEST FOR Supporting the ankle with advanced Figure-6 configuration, flexible stays and compression technology.

- Highest quality elastic construction
- Athletic Trainer-like Figure-6 strap configuration for stability
- Engineered with flexible side stays integrated into comfort gel pads for enhanced support and protection
- Compression knit for therapeutic circulation and improved recovery
- Breathable and moisture-wicking comfort
- Anatomical design naturally contours and avoids bunching
- Quick on quick off
- Fits left or right

COLOURS Black

Contents: 74% Nylon / 16% Polyester / 7% Rubber / 8% Spandex (elastane)



SIZE:

	S	M	L	XL
EU Shoe Size:	37.5-39	40-43	43.5-44.5	45-48.5
UK Men's Shoe Size:	5-6.5	7-8.5	9-10	11-13.5
Measure around ankle:	20.3-21.6 cm 8-8.5"	21.6-22.9 cm 8.5-9"	22.9-24.1 cm 9-9.5"	24.1-25.4 cm 9.5-10"

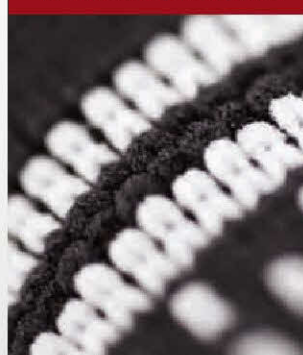
High grade 4-way stretch



Gel buttress for more protection



Moisture-wicking weave pattern



Wrap system for extra support





3 LEVEL 3: MAXIMUM PROTECTION

195 Ankle Brace with Straps

BEST FOR Helping to prevent and/or recover from common ankle sprains

- Athletes participating in an independent study at a major research university had 3x fewer injuries when wearing the 195
- Constructed of single-layer polyester fabric for full support and minimal weight
- Design simulates athletic tape with figure-6 strapping pattern
- Compression-comfort top strap for custom fit
- Fully adjustable without unlacing or removing shoe
- Ventilated tongue breathes with you
- Padded lining and reinforced closures
- Fits left or right

COLOURS Black or White

Contents: 600 Denier Polyester



SIZE:	XS	S	M	L	XL
EU Shoe Size:	38.5	40-42.5	42.5-44.5	44.5-47.5	48+
UK Men's Shoe Size:	6-7	7-8	8-10	10-12.5	13+
UK Women's Shoe Size:	5.5-6.5	6.5-7.5	7.5-9.5	9.5-11	11+

3 LEVEL 3: MAXIMUM PROTECTION

199 Ankle Brace / Lace-up with Stays

BEST FOR Helping to prevent and/or recover from common ankle sprains

- Spring steel medical stays for solid support
- Built of highly breathable two-layer polyester/vinyl mesh
- Ventilated tongue breathes with you
- Highly breathable lining and reinforced eyelets
- Fits left or right

COLOURS Black or White

Contents: Vinyl coated Polyester



SIZE:	XS	S	M	L	XL
EU Shoe Size:	38.5	40-42.5	42.5-44.5	44.5-47.5	48+
UK Men's Shoe Size:	6-7	7-8	8-10	10-12.5	13+
UK Women's Shoe Size:	5.5-6.5	6.5-7.5	7.5-9.5	9.5-11	11+

3 LEVEL 3: MAXIMUM PROTECTION

197 Ankle V Brace with Flexible Hinge

BEST FOR Helping to prevent ankle injuries, including high and low ankle sprains as well as recovery

- Low friction, flexible hinge for unrestricted range of motion and superior support
- Comfortably aligns foot and ankle with anatomical stirrup design
- Adjustable upper and lower strap for custom fit
- Fits left or right

COLOURS Black

Contents: Molded Parts: 95% Polypropylene / 5% Glassfiber; Soft Parts: 50% Polyester / 50% PE



SIZE:	S	M	L
EU Shoe Size:	38-42.5	42.5-44.5	44.5+
UK Men's Shoe Size:	5.5-8	8-10	10+
UK Women's Shoe Size:	5-7.5	7.5-9.5	9.5+



3 LEVEL 3: MAXIMUM PROTECTION

A101 Ankle Brace / Lace-up with Inserts

BEST FOR Helping to prevent and/or recover from common ankle sprains

- Spring steel stays for serious support
- Removable medical inserts for added protection
- Durable, lightweight construction
- Ventilated tongue for added comfort
- Fits left or right

COLOURS Black or White

Contents: PVC laminated Polyester

SIZE:	XS	S	M	L	XL
EU Shoe Size:	38.5	40-42.5	42.5-44.5	44.5-47.5	48+
UK Men's Shoe Size:	6-7	7-8	8-10	10-12.5	13+
UK Women's Shoe Size:	5.5-6.5	6.5-7.5	7.5-9.5	9.5-11	11+



2 LEVEL 2: ADVANCED PROTECTION

4100 ELITE RUNNERS THERAPY Achilles Sleeve

BEST FOR Therapeutic support for and pain relief from moderate achilles tendonitis

- Dual compression anatomical design for enhanced pain relief, recovery and support
- Contoured support pad targeted to the achilles
- Ergonomic, lightweight design for all-workout comfort and fit
- Moisture-wicking, breathable fabric with 4-way stretch
- Fits left or right

COLOURS Black

Contents: 44% Nylon / 11% Polyester / 20% TPU / 25% EVA

SIZE:	S	M	L	XL
EU Shoe Size:	37.5-39	40-43	43.5-44.5	45-48.5
UK Men's Shoe Size:	5-6.5	7-8.5	9-10	11-13.5
UK Women's Shoe Size:	4.5-6	6.5-8	8.5-9.5	10.5-13



2 LEVEL 2: ADVANCED PROTECTION

4101 ELITE RUNNERS THERAPY Plantar Fasciitis Sleeve

BEST FOR Heel and arch support for pain relief and inflammation reduction due to plantar fasciitis

- Dual compression anatomical design for enhanced pain relief, recovery and support
- Contoured support pad targeted to the arch and plantar fascia
- Ergonomic, lightweight design for all-workout comfort and fit
- Moisture-wicking, breathable fabric with 4-way stretch
- Anatomically specific for right or left ankle

COLOURS Black

Contents: 41% Nylon / 9% Polyester / 25% TPU / 25% EVA

SIZE:	S	M	L	XL
EU Shoe Size:	37.5-39	40-43	43.5-44.5	45-48.5
UK Men's Shoe Size:	5-6.5	7-8.5	9-10	11-13.5
UK Women's Shoe Size:	4.5-6	6.5-8	8.5-9.5	10.5-13





2 LEVEL 2: ADVANCED PROTECTION

433 Ankle Support Mesh with Straps

BEST FOR Minor to moderate ankle support plus relief from pain associated with arthritis and tendonitis

- Breathable non-neoprene mesh provides highly controlled compression without heat retention
- Pull-on foot sleeve with adjustable, elastic figure-8 straps with hook and loop closure
- Fits left or right

COLOURS Black or White

Contents: Monofilament Elastic and Polyester mesh

SIZE:

	S	M	L	XL
EU Shoe Size:	38-42.5	42.5-44.5	44.5-47.5	48+
UK Men's Shoe Size:	7-8	8-10	10-12.5	13+
UK Women's Shoe Size:	6.5-7.5	7.5-9.5	9.5-11	11+

2 LEVEL 2: ADVANCED PROTECTION

432 Ankle Support with Figure-8 Straps

BEST FOR Minor to moderate ankle support plus relief from pain associated with arthritis and tendonitis

- Wrap-around figure-8 strap design provides compressive comfort and pain relief
- Exclusive 5-needle stitch for a flatter, cleaner and stronger seam
- Adjustable hook and loop closure
- Latex-free neoprene provides thermal compression
- Exterior layer of nylon fabric for durability
- Fits left or right

COLOURS Black

Contents: 100% Latex-free 3,2 mm Neoprene (CR) – Exclusive of binding/straps/cover fabric

SIZE:

	S	M	L	XL
EU Shoe Size:	38-42.5	42.5-44.5	44.5-47.5	48+
UK Men's Shoe Size:	7-8	8-10	10-12.5	13+
UK Women's Shoe Size:	6.5-7.5	7.5-9.5	9.5-11	11+

1 LEVEL 1: PRIMARY PROTECTION

431 Ankle Sleeve

BEST FOR Relief from pain associated with arthritis and tendonitis; minor ankle support

- 4-way stretch facilitates comfort and compression in all directions
- Exclusive 5-needle stitch for a flatter, cleaner and stronger seam
- Latex-free neoprene provides thermal compression
- Exterior layer of nylon fabric for durability
- Fits left or right

COLOURS Black

Contents: 100% Latex-free 3.2mm Neoprene (CR) - Exclusive of binding/cover fabric

SIZE:

	S	M	L	XL
EU Shoe Size:	38-42.5	42.5-44.5	44.5-47.5	48+
UK Men's Shoe Size:	7-8	8-10	10-12.5	13+
UK Women's Shoe Size:	6.5-7.5	7.5-9.5	9.5-11	11+





2 LEVEL 2: ADVANCED PROTECTION

5122 Ankle Sleeve / 4-way Elastic with Figure-8 Straps

BEST FOR >> Moderate support and relief from pain associated with arthritis, bursitis and tendonitis

- 4-way stretch elastic material engineered for increased compression and fit without heat retention
- Wrap around figure-8 strap design provides added stability, support and comfort
- Medial and lateral gel buttresses apply targeted soft tissue supportive compression
- Ideal for those with neoprene allergies
- Fits left or right

COLOURS >> Black

Contents: 62% Nylon / 38% Elastane - Exclusive of trim/straps

SIZE:	S	M	L	XL
EU Shoe Size:	38-42.5	42.5-44.5	44.5-47.5	48+
UK Men's Shoe Size:	7-8	8-10	10-12.5	13+
UK Women's Shoe Size:	6.5-7.5	7.5-9.5	9.5-11	11+



2 LEVEL 2: ADVANCED PROTECTION

5115 Ankle Sleeve with 4-way Elastic with Gel Buttresses

BEST FOR >> Support and relief from pain, swelling and inflammation due to tendonitis, arthritis or injury

- Highly engineered 4-way stretch elastic material engineered for superior fit and compression with minimal heat retention
- Medial and lateral gel buttresses apply targeted soft tissue supportive compression
- Ideal for those with neoprene allergies
- Fits left or right

COLOURS >> Black

Contents: 62% Nylon / 38% Elastane

SIZE:	S	M	L	XL
EU Shoe Size:	38-42.5	42.5-44.5	44.5-47.5	48+
UK Men's Shoe Size:	7-8	8-10	10-12.5	13+
UK Women's Shoe Size:	6.5-7.5	7.5-9.5	9.5-11	11+



1 LEVEL 1: PRIMARY PROTECTION

511 Ankle Sleeve / Elastic

BEST FOR >> Support and relief from pain associated with tendonitis, arthritis and minor injury

- Breathable non-neoprene knitted elastic construction
- Ideal for those with neoprene allergies
- Fits left or right

COLOURS >> Black

Contents: 65% Polyester / 25% Rubber / 10% Nylon

SIZE:	S	M	L	XL
EU Shoe Size:	38-42.5	42.5-44.5	44.5-47.5	48+
UK Men's Shoe Size:	7-8	8-10	10-12.5	13+
UK Women's Shoe Size:	6.5-7.5	7.5-9.5	9.5-11	11+



Roberto Soldić
Professional MMA Athlete,
Germany



APPLY NOW

We couldn't really innovate **ICE** (not yet, anyway), but we could innovate the way ice is **APPLIED**. True Ice is designed with a precise anatomical fit for outstanding **COMFORT**, plus compression for further healing.

- Improved body contact with flexible ice reservoir
- Load ice easily via large opening
- Watertight seal design prevents leaking
- Ice reservoir collar construction keeps True Ice properly positioned

234

TRUE ICE™
Therapy Shoulder Wrap

[PAGE 76]





231 TRUE ICE™ THERAPY Knee / Leg Wrap

- Easy-fill True Ice reservoir utilizes the convenience of real ice
- Use wherever your sport takes you—the field, court, gym or home
- Anatomically designed compression wrap concentrates ice and compression on affected area to enhance healing
- Durable straps for customizing fit and adjusting compression
- Simple to wear, easy on-off
- May be worn to treat other body parts
- Includes two (2) 9" individual reservoirs to surround knee
- Fits left or right

COLOURS > Black

Contents: 100% SBR Neoprene with 87% Polyester / 13% Spandex (elastane) - Exclusive to trims and binding



SIZE:

ONE SIZE

232 TRUE ICE™ THERAPY Ankle Wrap

- Easy-fill True Ice reservoir utilizes the convenience of real ice
- Use wherever your sport takes you—the field, court, gym or home
- Anatomically designed compression wrap concentrates ice and compression on affected area to enhance healing
- Durable straps for customizing fit and adjusting compression
- Simple to wear, easy on-off
- Includes two (2) 9" individual reservoirs to surround ankle
- Fits left or right

COLOURS > Black

Contents: 100% SBR nNeoprene with 87% Polyester / 13% Spandex (elastane) - Exclusive to trims and binding



SIZE:

ONE SIZE



233 TRUE ICE™ THERAPY Elbow / Wrist Wrap

- Easy-fill True Ice reservoir utilizes the convenience of real ice
- Use wherever your sport takes you—the field, court, gym or home
- Anatomically designed compression wrap concentrates ice and compression on affected area to enhance healing
- Durable straps for customizing fit and adjusting compression
- Simple to wear, easy on-off
- May be worn to treat other body parts
- Includes one (1) 7" individual reservoir to surround elbo with wrist
- Fits left or right

COLOURS > Black

Contents: 100% SBR Neoprene with 87% Polyester / 13% Spandex (elastane) - Exclusive to trims and binding

SIZE:

ONE SIZE



234 TRUE ICE™ THERAPY Shoulder Wrap

- Easy-fill True Ice reservoir utilizes the convenience of real ice
- Use wherever your sport takes you—the field, court, gym or home
- Anatomically designed compression wrap concentrates ice and compression on affected area to enhance healing
- Durable strap for customizing fit and adjusting compression
- Simple to wear, easy on-off
- Includes two (2) 9" individual reservoirs to surround shoulder
- Fits left or right

COLOURS > Black

Contents: 100% SBR Neoprene with 87% Polyester / 13% Spandex (elastane) - Exclusive to trims and binding

SIZE:

ONE SIZE



235 TRUE ICE™ THERAPY Back / Ribs Wrap

- Easy-fill True Ice reservoir utilizes the convenience of real ice
- Use wherever your sport takes you—the field, court, gym or home
- Anatomically designed compression wrap concentrates ice and compression on affected area to enhance healing
- Durable strap for customizing fit and adjusting compression
- Simple to wear, easy on-off
- May be worn to treat other body parts
- Includes one (1) 10" individual reservoir to surround back/ribs

COLOURS > Black

Contents: 100% SBR Neoprene with 87% Polyester / 13% Spandex (elastane) - Exclusive to trims and binding

SIZE:

ONE SIZE



211P Reusable Hot-Cold Gel Pack / Single

211T Reusable Hot-Cold Gel Pack / 12 Bulk-pack

- Keep in freezer for the cold
- Heat in hot water or microwave for the hot

Size: 26 cm x 12 cm



212P Instant Cold Pack / Single

212T Instant Cold Pack / 16 Bulk-pack

- Immediate relief without freezing or refrigerating
- A must for any athletic trainer's, coach's or athlete's bag
- Disposable

Size: 24 cm x 14 cm

Contents: Mixture of Nitrogenous salts



217 Ice Spray

BEST FOR Helping to relieve pain from sprains and other sports injuries

- Ideal immediately after exercise
- Ready-to-use spray can

Size: 300 ml





61350 Skin Tape / Single

61515 Skin Tape / 24 Bulk-pack

- Adhesive elastic bandage on paper support for Kinesiology taping
- Lightweight, water and sweat resistant
- Skin-friendly

COLOURS >> Beige, Black, Royal Blue or Bright Pink

Size: 5 cm x 5 m

Content: 100% Poly-cotton



61250 Eurotape / 3,8 cm x 10 m / 12 blisterpack

61300 Eurotape / 2,5 cm x 10 m / 12 blisterpack

- Pro-quality, easy-tear, lightweight athletic tape
- On a plastic core with serrated edges

COLOUR >> White

Content: 100% Poly-cotton



61511 Eurotape / 2,5 cm x 10 m / 48 Bulk-pack

61512 Eurotape / 3,8 cm x 10 m / 32 Bulk-pack

61513 Eurotape / 5 cm x 10 m / 24 Bulk-pack

- Pro-quality, easy-tear, lightweight athletic tape
- On a plastic core with serrated edges

COLOUR >> White

Content: 100% Poly-cotton



62341 Underwrap / 48 Bulk-pack

- Protect the skin with pre-taping polyurethane foam on a roll
- 48- pack bulk-packed

COLOUR >> Beige

Size: 7 cm x 27 m

Content: Polyurethane foam



61400P Sport Tape / color / Single

61400T Sport Tape / color / 24 Bulk-pack per color

- Pro-quality, easy-tear, lightweight athletic tape
- On a plastic core with serrated edges

COLOURS >> Black, Blue, Scarlet, Green, Yellow or Orange



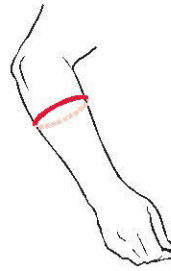


MEASURE TRUE



WRIST

Keeping wrist straight, measure directly over joint, including wrist bones.



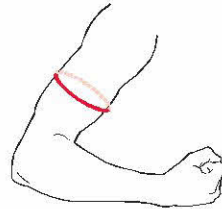
FOREARM

With your arm slightly flexed, measure the fullest part of your forearm, typically midway between your wrist and elbow.



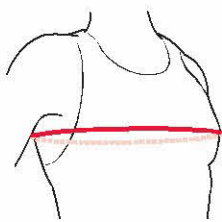
ELBOW

Bend your elbow to approximately 45 degrees and measure directly over the joint. When ordering a pair, take measurements of both elbows and use the average of the results.



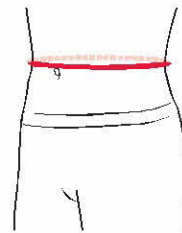
BICEP

With your arm slightly flexed (remember, "slightly"), measure the fullest part of upper arm/bicep. When ordering a pair, take measurements of both arms and use the average of the results.



CHEST

Stand and measure around the fullest part of your chest. Tape should be parallel with the floor. (No superhero chest puffing).



WAIST

Stand with stomach relaxed (c'mon, you're among friends here). Measure the minimum circumference (skinniest part) in the waist area. Tape should be parallel with the floor.



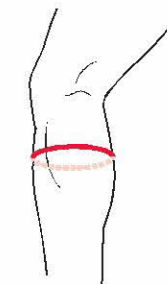
THIGH

Stand and measure the maximum circumference (meatiest part) of your upper leg near the crotch.



KNEE

Measure the knee to be protected (you likely figured that). Stand and bend your leg just less than 45 degrees, measure around the largest part of knee, directly over the patella (kneecap).



CALF

Stand and measure the calf in question (you knew this). Measure at the fullest part of the calf. When ordering a pair, take measurements of both calves and use the average of the results.



FOOT

Measure circumference at center of arch directly over top of instep.



ANKLE

Stand and measure ankle circumference 1"/25cm above center of inner ankle bone tip (the knobby bits). If you measure while seated, flex your foot slightly back toward yourself as you measure.



VISUAL INDEX



8837
ELITE Compression
Arm Sleeves
P6



6511
ELITE COMPRESSION Arm
Sleeve / Single
P7



6566
Compression Arm Sleeve
/ Pair
P8



541
Floorball Gloves / Pair
P9



8200
CROSS Compression™ Shorts
with Hip Spica
P10



8100
Men's Compression Shorts
P11



704
Women's Compression Shorts
P11



8831
ELITE RECOVERY
Compression Socks / Pair
P12



8832
ELITE Compression
Runner Socks / Pair
P13



8836
ELITE Compression Calf
Sleeves / Pair
P14



8841
Multisports Compression
Socks / Pair
P15



8846
Multisports Compression Calf
Sleeves / Pair
P15



6400
Abrasion Knee
Sleeves / Pair
P15



X607
Dual Layer Compression
Elbow Sleeves / Pair
P16



X501
FLEX FIT
Wrist Wraps / Pair
P17



X503
HEAVY DUTY Wrist Wraps
/ Pair
P17



X601
DUAL LAYER Compression
Arm Sleeves / Pair
P17



X801
DUAL DENSITY Knee Support
Sleeves / Pair
P19



X605
DUAL LAYER Compression
Knee Sleeves / Pair
P19



X609
DUAL LAYER Compression
Calf Sleeves / Pair
P19



6501
ELITE HEX® Shooter Arm
Sleeve / Single
P22



651
HEX® Forearm
Sleeves / Pair
P25



6500
HEX® Shooter
Arm Sleeve / Single
P25



7962
HEX® Tank Shirt / 3-pad
P26



7737
HEX® Goalkeeper
Shirt EXTREME
P26



7738
HEX® Goalkeeper
Shirt DIVE
P26



7739
HEX® Goalkeeper Shirt
BARCELONA
P28



7742
HEX® Goalkeeper Short
BARCELONA
P28



7746
Goalkeeper 3/4 Thigh
BARCELONA
P28



7743
Dual Performance Shorts
P29



7747
Dual Performance Pants
P29



7745
HEX® Goalkeeper 3/4 Thights
P30



7991
HEX® Shorts with Contoured
Wrap-around Thigh
P30



737
HEX® Thudd Shorts™
P30



7741
HEX® Goalkeeper Shorts
P31



724
HEX® Sliding Shorts
P31



VISUAL INDEX



3300
Athletic Supporter / Meshy
P31



6448
ELITE HEX[®] Leg
Sleeve / Single
P32



6446X
HEX[®]TUF Leg
Sleeves / Pair
P34



6446
HEX[®] Leg Sleeves / Pair
P35



6440
HEX[®] Knee / Elbow / Shin
Sleeves / Pair
P35



601
Sport Knee Pads
/ Pair
P37



602
Flex-Force Knee Pads / Pair
P37



6446
Volleyball Knee Pads / Pair
P37



671
Handball Knee Pads / Single
P38



672
Handball Elbow Pads / Single
P38



454
Wrist Brace / Adjustable
P42



452
Wrist Strap / Adjustable
P42



451
Wrist Wrap / Adjustable
P42



458
Thumb Stabilizer
P43



455
Wrist Support
P43



513
Wrist Sleeve / Adjustable /
Elastic
P43



489
Tennis Elbow Strap with Pads
P44



486
Tennis Elbow Strap /
Adjustable
P44



485
Tennis Elbow Support with
Strap
P44



5130
Elbow Sleeve / 4-way Elastic
with Gel Buttresses
P45



512
Elbow Sleeve / Elastic
P45



481
Elbow Support
P45



463
Shoulder Wrap
P46



491
Waist Trimmer
P45



493
Back Stabilizer
P47



495
Back Support
P47



478
Thigh Wrap / Adjustable
P49



471
Thigh Sleeve
P49



479
Neoprene Shorts with
Adjustable Drawstring
P49



4200
ELITE Bio-Logix[™]
Knee Brace
P50



5149
ELITE Engineered Elastic[®]
Knee Brace with Dual Wrap
and Hinges
P53



5147
ELITE Engineered Elastic[®]
Knee Support with Dual Wrap
and Stays
P53



4205
VOW[™] Knee Wrap with Hinges
and Straps
P55



4203
VOW[™] Knee Wrap with Stays
and Straps
P55



4201
VOW[™] Knee Wrap
with Stays
P55



429X
Knee Brace with Polycentric
Hinges and Cross Straps
P57



VISUAL INDEX



429
Knee Brace with Polycentric Hinges
P57



422
Knee Brace with Dual Disk Hinges
P57



425
Knee Support with Stays and Cross Straps
P58



421
Knee Support with Stays
P58



419
Knee Support / Adjustable
P59



414
Knee Strap / Patella
P59



4103
ELITE RUNNERS THERAPY Iliotibial Band Strap
P59



5125
Knee Sleeve / 4-way Elastic with Gel Buttress
P60



5116
Knee Sleeve / 4-way Elastic with Gel Buttress and stays
P60



401
Knee Sleeve
P61



402
Knee Support with Open Patella
P61



409
Knee Wrap / Adjustable with Open Patella
P62



510
Knee Sleeve / Elastic
P62



441
Calf Sleeve
P63



4102
ELITE RUNNERS THERAPY Shin Splint Sleeve
P63



4305
Phantom 3+ Ankle Brace
P64



4303
Phantom 2+ Ankle Brace
P65



4302
Phantom 2 Ankle Brace
P65



4314
Stealth Cleat 3+ Ankle Brace
P66



4311
Stealth Cleat 2+ Ankle Brace
P66



4197
ELITE Bio-Logix[®] Ankle brace
P68



5146
ELITE ENGINEERED ELASTIC[™] Ankle Brace with Figure-6 Strap and Stays
P69



195
Ankle Brace with Straps
P70



199
Ankle Brace / Lace-up with Stays
P70



197
Ankle V Brace with Flexible Hinge
P70



A101
Ankle Brace / Lace-up with Inserts
P71



4100
ELITE RUNNERS THERAPY Achilles Sleeve
P71



4101
ELITE RUNNERS THERAPY Plantar Fasciitis Sleeve
P71



433
Ankle Support Mesh with Straps
P72



432
Ankle Support with Figure-8 Straps
P72



431
Ankle Sleeve
P72



5122
Ankle Sleeve / 4-way Elastic with Figure-8 Straps
P73



5115
Ankle Sleeve with 4-way Elastic with Gel Buttresses
P73



511
Ankle Sleeve / Elastic
P73



231
TRUE ICE[™] THERAPY Knee / Leg Wrap
P73



232
TRUE ICE[™] THERAPY Ankle Wrap
P75



VISUAL INDEX



233
TRUE ICE™ THERAPY Elbow /
Wrist Wrap
P76



234
TRUE ICE™ THERAPY
Shoulder Wrap
P76



235
TRUE ICE™ THERAPY Back /
Ribs Wrap
P76



211P
Reusable Hot-Cold Gel Pack
/ Single
P77



211T
Reusable Hot-Cold Gel Pack /
12 Bulk-pack
P77



212P
Instant Cold Pack / Single
P77



212T
Instant Cold Pack / 16
Bulk-pack
P77



217
Ice Spray
P77



61350
Skin Tape / Single
PXX



61515
Skin Tape / 24 Bulk-pack
PXX



61250
Eurotape / 3,8 cm x 10 m / 12
blisterpack
PXX



61300
Eurotape / 2,5 cm x 10 m / 12
blisterpack
PXX



61511
Eurotape / 2,5 cm x 10 m / 48
Bulk-pack
PXX



61512
Eurotape / 3,8 cm x 10 m / 32
Bulk-pack
PXX



61513
Eurotape / 5 cm x 10 m / 24
Bulk-pack
PXX



62341
Underwrap / 48 Bulk-pack
PXX

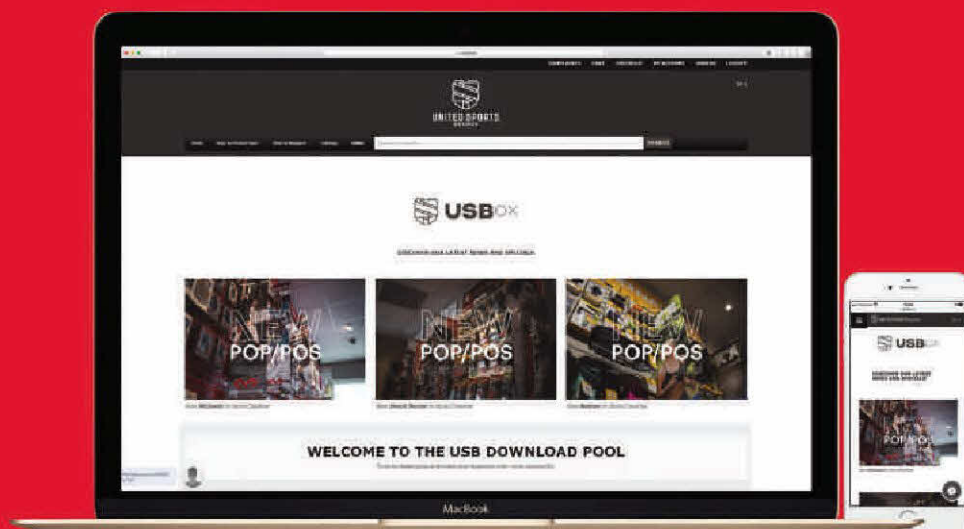


61400P
Sport Tape / color / Single
PXX



61400T
Sport Tape / color / 24 Bulk-
pack per color
PXX

ORDERING ON-THE-GO?
**DISCOVER OUR NEW
B2B PORTAL**







UNITED
SPORTS
BRANDS



MCDAVID



NATHAN



SHOCK
DOCTOR



HAGELBERG 29 - 2250 OLEN, BELGIUM
©2019 UNITED SPORTS BRANDS | WWW.MCDAVID.EU